



TONY MOORE

CRITICAL NEIGHBOURHOOD INSPECTOR



Question :-

What makes a Well Functioning or a Good.....

City

Neighbourhood

Community

Society



# Police Functions

*Outlined in Section 32 Police (NI) Act 2000:*

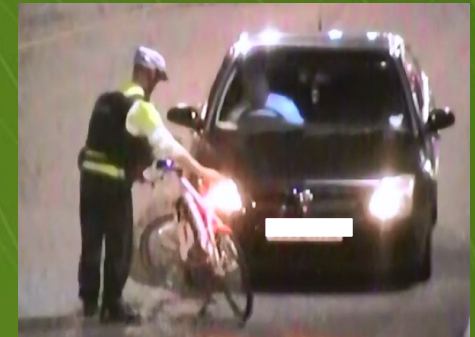
To protect life and property

To preserve order

To prevent the commission of offences

Where offences have been committed;

Take appropriate action to secure evidence and  
bring those responsible to justice





# Core policing principles N.I.

*Outlined in Section 31 (A) Police (NI) Act 2000*

Police officers shall carry out their functions with the aim—

- (a) of **securing the support of the local community**, and
- (b) of **acting in co-operation with the local communities**

Police officers shall be guided by the **Code of Ethics under Section 52**



# Command Structures

## Night Time Economy

### *Planned Events*

**Gold Commander** ACC – Sets overall policing strategy

**Silver Commander** Supt – Implements tactical plan

**Bronze Commander** – Geographical area of responsibility



# Event Management Considerations

- Write a plan
- Clearly defined roles
- Communication plan
- Consult and notify emergency services
- Provide stewards/ marshals/ volunteers
- Brief your people on their role
- Contingency plans

Keeping People Safe



# CCTV IMAGES NIGHT TIME ECONOMY



# Domestic Dispute leading to Criminal Damage





Male Tampering with  
Safety Equipment  
and  
Spat at Police leading  
to Arrest.



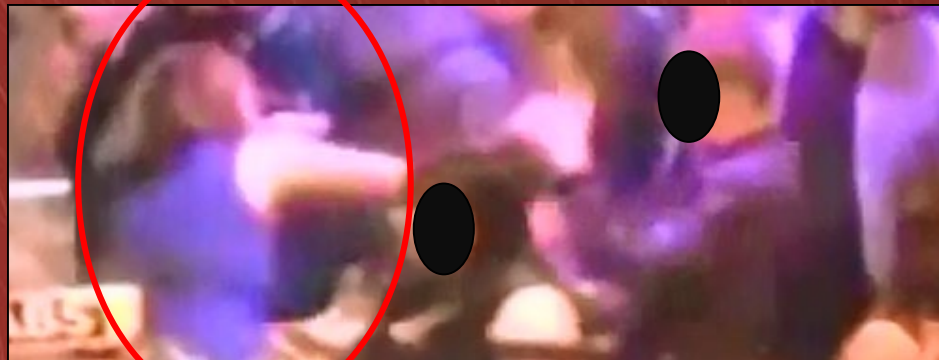
# Male Consuming Alcohol in the City Alcohol Free Zone



# Males Ejected from Night Club Interaction by Door Staff



## Violent Female attacks members of the Public





One Punch Assault  
Victim Vulnerable  
to Theft



Group of Females  
involved in a Drunken  
Fight on the road.



Group of Youths  
Consuming  
Illegal Drugs on the  
City Walls