

DERRY CITY AND STRABANE DISTRICT COUNCIL

LOCAL DEVELOPMENT PLAN (LDP) 2032



EVIDENCE BASE EVB 13

Tourism Updated May 2017

This Document is one in a series, which builds up to form the 'evidence base' that informs the preparation of the Local Development Plan (LDP).

It comprises initial Workshop Paper(s) on this Planning topic that were presented to Council Members during 2016 / 2017, which have been subject to Member discussion and input, before further discussion at the Planning Committee (LDP) and in turn feeding into the LDP Preferred Options Paper (POP) and then the Plan Strategy (PS) and eventually the Local Policies Plan (LPP) which together form the LDP.

Therefore, the afore-mentioned evidence base will be continually updated, to additionally include the latest information, input from public engagement, statutory consultees, stakeholder groups, Sustainability Appraisal and from other Departments within the Council, including Community Planning.

The Evidence Base is published as a 'supporting document' in accordance with Article 10(a) and 15(a) of the Planning (LDP) Regulations (NI) 2015



CONTENTS

1. Introduction to Paper
2. Legislation and Policy for Tourism in the LDP
3. Key Players in Tourism
4. Economic Impact of Tourism
5. Tourism Resources across the District
6. Conclusion – Tourism in the LDP

Paper 2: Tourism

Purpose of Paper: The purpose of this paper is to provide Council Members with a review of the current tourism provision and needs across the District. The paper also examines how the LDP policies can strategically meet the planning needs of Tourism in the District.

Content: The paper provides information on:-

- i. The relevant legislation and regional policy for tourism.
- ii. A profile of the current tourism provision, both rural and urban.
- iii. The economic impact of Tourism.
- iv. Conclusion, seeking input on how the LDP can address Tourism Needs.

Conclusion: Members input is invited at Workshop 7.

1.0 Introduction to Paper

1.1 The tourism information presented in this paper will assist the Council in highlighting the importance of tourism within the Local Development Plan, as a basis for informed debate at Workshop 7 and hence working towards ‘options’ on tourism designations/policies and then LDP Preferred Options to be published in Spring 2017.

1.2 Investment in tourism brings new facilities to our towns, cities and surrounding landscapes, thereby creating a sense of pride for the people of our District. Tourism makes a vital contribution to the District in terms of the revenues it generates, the employment opportunities it provides, and the potential it creates for economic growth. It also provides the opportunity to get maximum benefit from our wealth of environmental and heritage assets; our waterways, landscapes and built heritage. There are also health benefits to be gained by a more active resident population who are motivated to be out and about exploring more of the District’s tourism assets. The LDP also has a role in securing high quality design and integrating tourism provision with necessary infrastructure. This will ensure that development is sustainable and achievable without damaging those qualities in the environment which are of acknowledged public value and on which tourism itself may depend.

2.0 Legislation and Policy for Tourism in the LDP

2.1 In preparing the new LDP, the Council will have regard to several existing plans and documents that set out the main legal and policy context and considerations of what the LDP is required to do and can include, in relation to tourism in the District.

2.2 **The Regional Development Strategy 2035 (RDS, launched 2012).** The RDS recognises tourism as a key element underpinning sustainable economic growth in Northern Ireland. Regional Guideline 4 (RG 4) seeks to promote a sustainable approach to the provision of tourism infrastructure to:

- Promote a balanced approach that safeguards tourism infrastructure while benefiting society and the economy.
- Improve facilities for tourists in support of the Tourist Signature Destinations.
- Encourage environmentally sustainable tourism development.

2.3 **Strategic Planning Policy Statement (SPPS)** was published in September 2015. The recent SPPS is the single most important document in guiding the requirements/content of the LDP. It states that in preparing Local Development Plans (LDPs) councils shall bring forward a tourism strategy, together with appropriate policies and proposals that must reflect the aim, objectives and policy approach of the SPPS, tailored to the specific circumstances of the plan area. The aim of the SPPS in relation to tourism development is to manage the provision of sustainable and high quality tourism developments in appropriate locations within the built and natural environment.

2.4 The regional strategic objectives for tourism are to:

- facilitate sustainable tourism development in an environmentally sensitive manner;
- contribute to the growth of the regional economy by facilitating tourism growth;
- safeguard tourism assets from inappropriate development;
- utilise and develop the tourism potential of settlements by facilitating tourism development of an appropriate nature, location and scale;
- sustain a vibrant rural community by supporting tourism development of an appropriate nature, location and scale in rural areas; and
- ensure a high standard of quality and design for all tourism development.

2.5 SPPS Policy states that there will be a general presumption in favour of tourism development within settlements, subject to meeting normal planning requirements. In the countryside, planning authorities must carefully manage tourism development. This is necessary in the interests of rural amenity, wider sustainability objectives and the long term health of the tourism industry. Accordingly, planning permission should not be granted for development that would, in itself or in combination with existing

and approved development in the locality, have an adverse impact on a tourism asset, such as to significantly compromise its tourism value.

2.6 Planning Policy Statement 16: Tourism sets out planning policy for tourism development, including the main forms of tourist accommodation and tourist amenities. In addition the PPS provides policy for the safeguarding of tourism assets from development likely to adversely impact upon the tourism value of the environmental asset.

2.7 The aim of this Planning Policy Statement (PPS) is to manage the provision of sustainable and high quality tourism developments in appropriate locations within the built and natural environment. The objectives of this Planning Policy Statement are the same as the SPPSs regional objectives – see 2.4. There are 8 policies in PPS 16:

1. TSM 1 Tourism Development in Settlements
2. TSM 2 Tourist Amenities in the Countryside
3. TSM 3 Hotels, Guest Houses and Tourist Hostels in the Countryside
4. TSM 4 Major Tourism Development in the Countryside – Exceptional Circumstances
5. TSM 5 Self Catering Accommodation in the Countryside
6. TSM 6 New and Extended Holiday Parks in the Countryside
7. TSM 7 Criteria for Tourism Development
8. TSM 8 Safeguarding of Tourism Assets

2.8 The existing **Derry Area Plan 2011** was adopted in May 2000 and contains 3 policies for tourism:

- Policy TU 1 Tourism Development. The Department will give favourable consideration to proposals for development which are appropriate in terms of their nature, scale and location.
- Policy TU 2 Tourism Design Consideration. The Department will require that all proposals for new tourism development comply with the basic principles of good design and landscaping.
- Policy TU 3 Existing Tourism Facilities. The Department will normally give favourable consideration to proposals which involve the consolidation and expansion of existing tourism facilities.

2.9 The **Strabane Area Plan 2001** notes the District's major natural resource lies in the Sperrin Area of Outstanding Natural Beauty. Additionally the gateway lies at the gateway to Donegal and experiences a substantial volume of through tourist traffic. Tourist related studies and strategies affecting the District and beyond, highlighted the importance of the route from Gortin through Plumbridge into Glenelly Valley and back to Strabane. The Plan acknowledged the scenic quality of this route by assessing all development proposals submitted along it against the policy set out

for the AONB. The Plan (published in 1989) stated that the area traditionally attracted a very small proportion of the Provinces Tourist trade, a situation which tourism studies and marketing strategies have sought to rectify. This included marketing the main traffic route from Newry to Strabane as an integrated tourist destination based on a range of existing and planned attractions. The studies highlighted the need for improvement and marketing of existing resources by the appropriate bodies, with a view to attracting the touring visitor, the day visitor and the activity based visitor.

2.10 The **Community Plan** introduced in April 2015 requires the Council to lead the process of creating a long term vision for the social, environmental and economic well-being of the area and its citizens. The District's Community Plan is expected in spring 2017, with higher level strategic policies, as well as incorporating existing strategies/proposals for the District. The Local Government Bill introduces a statutory link between the resultant Community Plan and the Council's Local Development Plan (LDP), in that the LDP must take account of the Community Plan in its preparation. Therefore it provides the key context at the local Council level for the preparation of the LDP. Principal Actions outlined in the Community Planning Process include championing Tourism, Arts and Culture by promoting sustainability and growth and improving accessibility and inclusion in Tourism, Arts and Culture.

2.11 **The One Plan** published in 2011 by Ilex recognised that tourism still represents a significant growth sector for the Northern Ireland economy and it is a sector that has been clearly identified in the One Plan. Employment and Economy Accelerating growth of tourism & culture economy is important. The future development of Tourism is a key driver of our local economy, and will be constrained unless it can show potential visitors that Derry is a stable, attractive place that is safe to visit. The One Plan also states that there should be Community-focused Tourism, Culture, Arts and Leisure. Tourism should offer opportunities for self-employment and enterprise, in particular the most disadvantaged. Tourism and culture are key drivers for the City and Region economy with significant potential for development.

2.12 **The Ebrington Framework** In January 2016, outline planning permission was granted for the framework for the regeneration of the former Ministry of Defence (MoD) site at Ebrington in Derry. The proposal is for a range of uses including museum and heritage, creative industries, education, research and development and hotel and leisure. It is the largest single regeneration site in Derry and arose from an extensive process of option development and public consultation. With west-facing frontage, river views, direct access to the Peace Bridge, the city centre, proximity to road, bus and rail infrastructure, car-parking and solid proposals for integrated culture, leisure and tourism development, Ebrington is one place within Derry that can make a difference on a scale to provide a destination for significant tourism and hotel development.

2.13 The Strabane Town Centre Masterplan 2010 In February 2009, the Department for Social Development (DSD), and Strabane District Council (SDC), with DoE Planning Service acting as a statutory partner, commissioned a Regeneration Masterplan for Strabane Town Centre. This non-statutory document provided the basis, and justification for decision making on the promotion, implementation and timing of urban regeneration initiatives in the town centre for the period up to 2020. It stated that Strabane must promote and develop its natural and heritage-based assets as other towns such as Donegal have in the past. The report stated that the quality of the town's restaurants and hotels is currently limited and the North West Passage marketing strategy has had limited success, but the town needs a quality hotel and resort underpinned by a small number of well-defined saleable attractions, such as fishing or outdoor activities. In terms of the leisure market, Strabane is in an ideal location to act as a gateway to Donegal and capitalise on cross border trade and tourism.

3.0 Key Players in Tourism

3.1 **Tourism NI** is responsible for the development of tourism and the marketing of Northern Ireland as a tourist destination to domestic tourists, from within Northern Ireland, and to visitors from the Republic of Ireland. They are a non-departmental public body of the Department for the Economy and work closely with other tourism bodies to help develop the visitor economy here and to market Northern Ireland to incoming visitors. Tourism Northern Ireland is the trading name of the Northern Ireland Tourist Board. It also advises the Department on the formulation and implementation of policy in relation to the development of tourism and interacts with other government departments, within the tourism industry in Northern Ireland and with its counterparts elsewhere in the UK and in the Republic of Ireland. There is a draft National Tourism Strategy in place and Tourism NI are currently working on a revised Strategy. The Council's Tourism Strategy will dovetail into the National Strategy.

3.2 The Historic Walled City of Derry has been designated as one of only five Signature Tourism Projects by the NI Tourist Board. Signature project designation seeks to achieve international standout for the NI tourism product, through creating a world-class visitor experience at key tourist destinations. Opportunities now exist for investors and operators within hotel, leisure and retail sectors. Over recent years Derry has developed extensively through progress on the Walled City Signature Project as well as investment from other key partners such as Derry City Council, Ilex Urban Regeneration Company and statutory agencies including DSD, NIEA and many others.

3.3 The **Northern Ireland Executive** identifies tourism as one of the building blocks to underpin its priority of growing a sustainable economy and investing in the future. The Programme for Government and the Northern Ireland Executive's Economic Strategy contain key strategic targets for tourism that recognise its potential to deliver significant economic growth in the future and supports the local tourism sector's long term aspiration to grow tourism into a £1 billion industry in Northern Ireland by 2020.

3.4 **Derry City and Strabane City Council** is a key stakeholder within the provision of tourism services and information. With 500,000 visitors per year, Derry is recognised as one of the fastest growing tourism destinations in Ireland. Tourism is now a credible economic generator with £25m in revenue and supporting 3,500 full time jobs. Derry and the North West are experiencing consistent annual growth in day visitors, overnight stays, spend and increased dwell time in the City. The Council is also involved in Visitor Centres in Derry, Strabane and formerly in Castlederg and Sperrins Heritage Centre.

3.5 The Council's Service Delivery Plan 2016/2017 'Culture: Achievements in Tourism' states that they:

- Completed £110k ERDF rural Tourism Programme, supported 60+ businesses and generated 10% business uplift in 83% of participants. 27 mentors supported 52 businesses. PR reach generated was 2.8m.
- Secured £187k funding for SAINT Rural Tourism Programme to 2018 to be run across the wider rural region and £169K for Cool Routes Programme Marine Tourism Programme under Northern Periphery and Arctic Programme 2014-2020.
- Supported 9 cultural tourism venues across council area through SLA's.
- Feasibility studies carried out for DARD Rural Tourism Capital programme.
- Extensive industry engagement programme carried out with partners including TNI (10 x industry seminars, Business Tourism subvention).
- Represented DCSDC on Walled City Management Committee, Irish Walls Towns Network, Appalachian Trail, Tyrone & Sperrins Tourism group.
- Runner Up for Derry in 'Foodie Town Ireland 2015'. Extensive programme developed for NI Year of Food and Drink.
- Delivered Craft Fair, Flavours of the Foyle, Taste our Best. NI Cycle Fest for 2016 secured for Baronscourt.

3.6 Proposals for a Maritime Museum at Ebrington Square will be located within two listed waterfront buildings including an extension. It is proposed to be completed in early 2020 and will feature galleries, archival reading rooms and educational facilities including the story of Derry's maritime heritage and will ensure the preservation of the collections and greater access and engagement to the collections and heritage of the city. The exhibitions will explore the history of trade along the River Foyle and the growth of Derry port. It will also include genealogical records and an emigration centre. Derry was a major embarkation point for emigration from Ireland during the eighteen and nineteenth centuries and the museum is expected to receive international visitors wishing to trace their genealogy. The museum will also explore the history of the Ebrington barracks site which was constructed by James II in 1689. There will also be a gallery on Derry's pivotal role in the Battle of Atlantic and the 1945 surrender of the U-boats at Lisahally Port.

3.7 There are other Government Departments and Agencies which promote Tourism in the District, in particular.

- **Loughs Agency** which is an agency of the Foyle, Carlingford and Irish Lights Commission (FCILC), established as one of the cross-border bodies under the 1998 Agreement between the Government of the United Kingdom of Great Britain and Northern Ireland and the Government of Ireland, exercising

a legal remit for conservation, protection and development across the Foyle and Carlingford catchments. It's objectives for these river systems and sea areas include development of fisheries and aquaculture, conservation, protection of inland fisheries, sustainable development of marine tourism. For example they have recently completed a number of status reports in relation to the development of local rivers as angling assets for use by locals and visitors alike.

- **DAERA Inland Fisheries** are responsible for a number of still water assets within the council area e.g. Lough Ash, Moorlough.
- The **DEARA Forestry Service** also has a role in the promotion of tourism in the District through their management of important natural assets, eg Killeter Forest, Goles Forest, Plumbridge, Ness and Ervey Woods, Killaloo, Loughermore Forest. There is a strong and reinforcing policy framework for the development of forest related tourism in Northern Ireland. One of the core strategic aims of the Forest service is to 'promote economic and environmental benefits and provide recreational opportunities for the people of Northern Ireland'.

3.8 **Rural Tourism** extends beyond the City and into an expansive rural hinterland that is host to a collection of tourism attractions covering a number of different themes including a rich and diverse natural and built heritage, activities, attractions and accommodation. These assets provide the ideal setting for a range of activities such as walking, cycling, mountain biking, fishing and other outdoor sports. The rural area is situated within a natural setting comprising of the Faughan Valley, Eglinton Historic Plantation Village and the Sperrin Mountains.

3.9 **DARD Rural Development Programme (RDP) 2014-2020** evaluates the current economic and social situation within the rural areas. The three most popular diversified activities are tourism, direct sales of farm products, and equine sports. However, the incidence of diversification is considerably lower in Northern Ireland than is the case for England where, using a similar definition, about 18% of farms were found to have some diversified activity in 2010. Some rural areas of Northern Ireland are uniquely picturesque with stunning landscapes and scenery. However the report states that the tourism infrastructure often does not match the potential of these rural areas to attract visitors to spend money in our rural businesses. Through support from the RDP, DAERA aim to maximise opportunities for tourism development, which make best use of our natural and cultural resources. Through the sustainable development of the rural economy, they aim to attract visitors and create new employment opportunities by providing support to existing rural tourism enterprises and for individuals wishing to develop tourism activities.

3.10 Derry City and Strabane District Council work with a range of stakeholders to develop rural tourism initiatives designed to enhance its key rural heritage and cultural assets, with the aim of spreading the economic benefits of tourism throughout the Council area. In terms of Rural Tourism the Council are working on Slow Adventure & Rural Tourism; Cool Routes, and a Sailing Initiative. The Council

have a working group made up of the private and community sectors primarily involved in promoting tourism within the Rural Areas. Food Development is just one of the key initiatives the Council are progressing this year. ‘Farm Gate to Plate’ idea may have implications for farm diversification opportunities. There has been development of still waters (Lough Ash, Moirlough) and other angling and natural heritage assets (e.g. Strabane Canal). There are also a number of feasibility studies that have been carried out in relation to developing opportunities for outdoor recreation and tourism at namely Strabane Canal; along the River Derg (From Lough Derg to Ardstraw); at Council’s Sperrin Heritage Centre (currently closed); walking opportunities/ improving access to sites of archaeological interest in the Sperrins / Faughan Valley. Additionally there has been a baseline audit carried out in relation to our camping/caravan provision, an area which would require investment within the District.

4.0 Economic Impact of Tourism

4.1 Tourism is a significant economic driver for Northern Ireland. It generates wealth, jobs, exports, civic pride and innovation. The Draft Tourism Strategy for Northern Ireland to 2020 sets out growth targets to increase our visitor numbers to 4.5 million, the employment supported by tourism to 50,000 jobs, and the revenue generated by tourism to £1 billion for the Northern Ireland economy.

4.2 Tourism Statistics are produced by a team within the Economic and Labour Market Statistics Branch (ELMS) which is part of the Northern Ireland Statistics and Research Agency (NISRA). This team is responsible for producing official tourism statistics on Northern Ireland. This includes statistics on the performance of hotels, guesthouses, B&Bs and self-catering establishments; the number of visitors to attractions; overseas visitors; and domestic tourism. Visit Derry reported that summer 2016 recorded the highest hotel occupancy levels ever seen in Derry. There was an average occupancy of 84% and subsequently August 2016 which reached 89% were both record months. This represented an increased occupancy shift of 6 percentage points on 2015. In July 17,000 hotel rooms were sold and this was subsequently surpassed by August with over 18,000 hotel rooms sold and this represented a 13% growth in room sales on 2015. The previous record month was August 2013 during City of Culture. Brexit is most likely to have an effect on visitor numbers in the District.

4.3 The latest research from ELMS for Derry and Strabane Local Government District show:

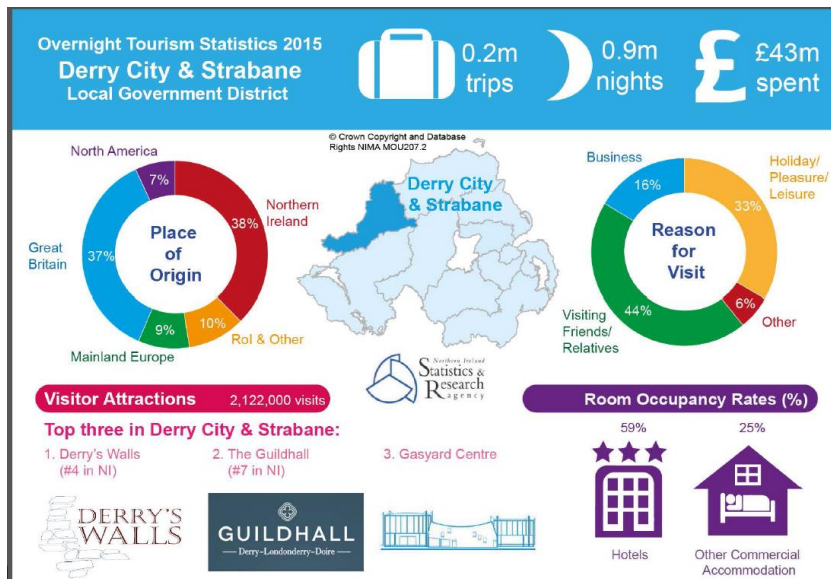
- 4,227 tourism jobs in Derry & Strabane LGD - 8% of total employee jobs
- The largest increase in overnight trips in 2013 was evident in Derry & Strabane LGD (+90,000), undoubtedly helped by the Derry UK City of Culture 2013
- This LGD attracts a higher proportion of European/North American overnight trips than each of the other LGDs except Belfast

4.4 Derry & Strabane LGD has the second highest proportion of overnight business visitors (just behind Belfast LGD) and the fourth lowest proportion of overnight holiday trips of all the LGDs

4.5 Derry & Strabane has the third largest number of hotel bed-spaces (after Belfast and the Causeway Coast & Glens) and the second highest hotel bed-space occupancy of all the LGDs

4.6 **Purple Flag Status** has been recognised for showing evening visitors an entertaining, diverse and safe night out. It is an accreditation process similar to Green Flag Award for parks and Blue Flag for beaches. Belfast, Enniskillen, Bangor and Derry-Londonderry have all been given Purple Flag Status.

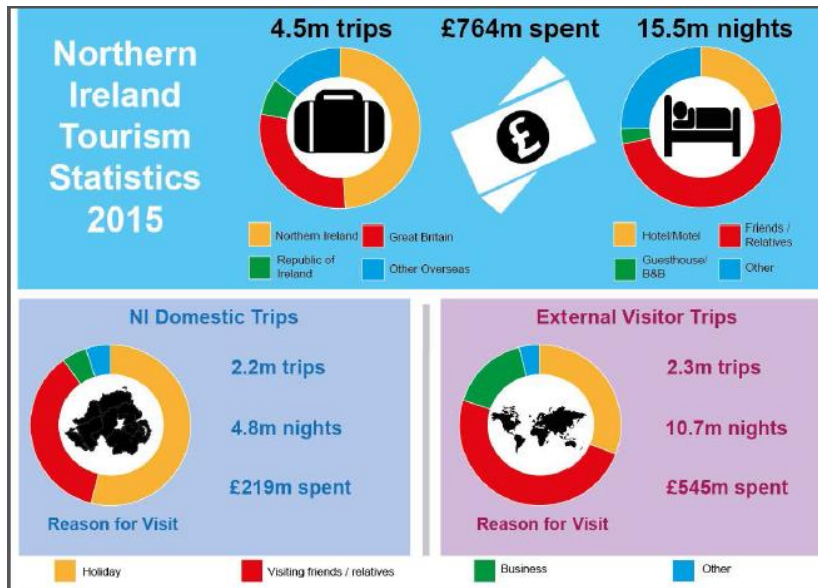
Derry City and Strabane District Council LDP Workshop 7 – Tourism



4.7 Bedspaces in Derry City and Strabane District Council:

DERRY CITY AND STRABANE DISTRICT COUNCIL	TOTAL	UNITS	ROOMS	BED-SPACES
HOTELS				
5 STAR/4 STAR	7		487	1,184
3 STAR	2		68	145
2 STAR	0		0	0
1 STAR	0		0	0
UNCLASSIFIED	3		135	334
TOTAL	12		690	1,663
GUESTHOUSES				
BED & BREAKFASTS	58		183	417
SELF-CATERING	59	108	266	549
HOSTELS	5		33	170
GUEST ACCOMMODATION	4		21	48
BUNKHOUSE	0		0	0
TOTAL	126		1,154	2,779

Derry City and Strabane District Council LDP Workshop 7 – Tourism



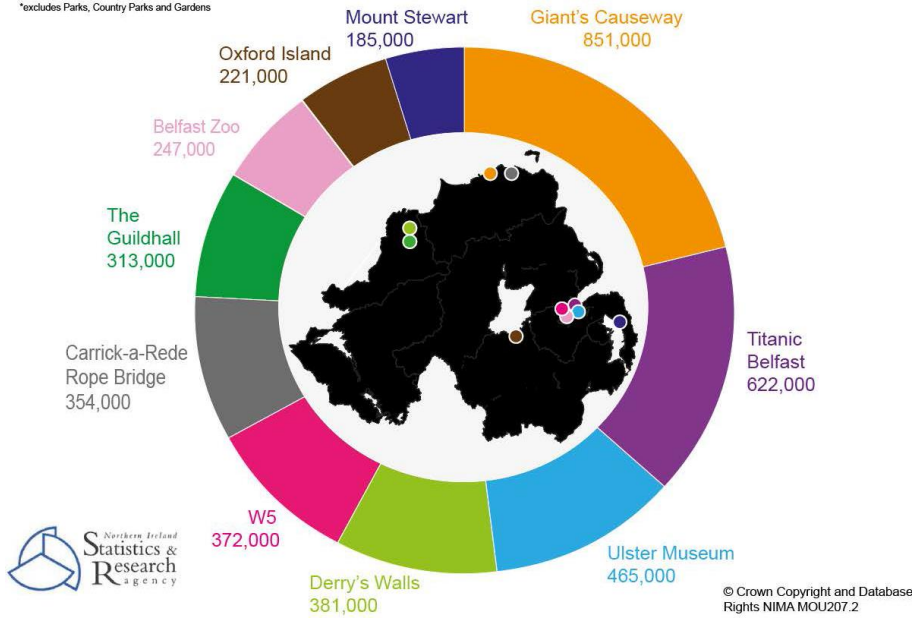
NEW LOCAL GOVERNMENT DISTRICT TOURISM ESTIMATES 2015

LGD	TRIPS	% of NI Trips	NIGHTS	% of NI Nights	SPEND (£)	% of NI Spend	Average spend per trip	Average spend per night	Average number of nights
Antrim & Newtownabbey	204,290	4%	672,902	4%	34,164,529	4%	£167.24	£50.77	3.3
Ards & North Down	376,755	8%	1,397,895	9%	51,013,302	7%	£135.40	£36.49	3.7
Armagh City, Banbridge & Craigavon	149,449	3%	562,866	4%	22,476,581	3%	£150.40	£39.93	3.8
Belfast	1,361,193	29%	4,237,733	27%	278,034,119	37%	£204.26	£65.61	3.1
Causeway Coast & Glens	911,388	20%	3,141,914	20%	136,770,965	18%	£150.07	£43.53	3.4
Derry City & Strabane	223,172	5%	889,416	6%	42,502,028	6%	£190.45	£47.79	4.0
Fermanagh & Omagh	341,051	7%	1,136,816	7%	54,585,277	7%	£160.05	£48.02	3.3
Lisburn & Castlereagh City	130,924	3%	714,336	5%	24,910,212	3%	£190.26	£34.87	5.5
Mid & East Antrim	382,224	8%	1,007,755	7%	45,628,631	6%	£119.38	£45.28	2.6
Mid Ulster	155,708	3%	613,667	4%	22,285,891	3%	£143.13	£36.32	3.9
Newry, Mourne & Down	404,442	9%	1,056,896	7%	47,736,730	6%	£118.03	£45.17	2.6
TOTAL	4,640,596	100%	15,432,195	100%	760,108,265	100%	£163.80	£49.25	3.3

Two of the top ten tourist attractions are in the Derry City and Strabane District:

Top 10 Visitor Attractions 2015

*excludes Parks, Country Parks and Gardens



5.0 Tourism Resources across the District

5.1 There are many diverse features of the built and natural heritage of Northern Ireland that can be regarded as tourism assets, in that they are important in attracting tourists and sustaining the tourism industry. Examples include historical and archaeological sites, conservation areas and Areas of Outstanding Natural Beauty. The safeguarding of such tourism assets from unnecessary, inappropriate or excessive development is a vital element in maintaining a healthy tourism industry. To allow such development could damage the intrinsic character and quality of the asset and diminish its effectiveness in attracting tourists.

5.2 **Visitor Attractions.** The most important aspect of a destination or area's appeal for visitors can be broadly defined as the set of attractions which give people cause to visit. These reasons to visit are commonly referred to as 'attractors'. Within the Plan Area there are a wide variety of visitor attractions. These range from:

City Walls	Museum of Free Derry
Peace Bridge	Tower Museum
Ness Woods, St Columbs Park	The River Foyle, The River Faughan, Finn, Derg etc.
Prehen House	The Playhouse
Culturlann Centre Apprentice Boys Memorial Hall	Riverwatch Aquarium and Visitor Centre
St Columb's Cathedral	The Guildhall
The Appalachian Trail	Burn Walk Sculptural Trail
The Wilson Ancestral Home	Newtownstewart Castle, Harry Avery Castle
Sion Mills Conservation Area Gray's Printer, Strabane	The Glenelly Valley and The Sperrins
Killeter Forest	Barrontop Farm, Donemana

5.3 **Built Heritage** is a finite resource which requires effective stewardship so that it may be enjoyed today and passed on in good order to inform future generations. Both the Derry and Strabane districts have a considerable wealth in Built Heritage and archaeological designations. These include the iconic Derry Walls - the largest monument in State Care in Northern Ireland. All of the 'Signature Projects' promoted by TourismNI over the last 10 years have had a strong built heritage element. Their research has shown that historic monuments and buildings are a major draw - particularly for visitors from outside the region. There is scope to expand the tourism industry and good management and coordination of historic assets will help. Historic buildings and monuments provide great character to a place. Such character can have a positive impact upon rents and also upon the reputation of businesses or agencies located in them. Inward investment is increasingly mobile and the historic environment helps to distinguish Northern Ireland from elsewhere. This can contribute to attracting business to the region and significant funds are invested in the historic environment every year in Northern Ireland. This sustains jobs, skills and knowledge. The District has the following:

- **Ancient Monuments** There are a substantial number of ancient monuments in the AONB and elsewhere including passage tombs and raths, for example, Apprentice Boys Memorial Hall and Ebrington both in Derry. There are also a number of built, buried and underwater remains of human activity, which date from prehistoric times to the present. The District has 857 archaeological sites.
- **Scheduled Monuments** The protection of historic monuments is completed through the scheduling process. There are a large number of Scheduled Monuments including several raths, tombs and standing stones.
- **Conservation Areas** There are five Conservation Areas located within the area. Two in the Strabane area - Sion Mills designated 1977 & Newtownstewart 1993 and three in the Derry Area - Historic City 1977, Clarendon Street 1978 & Magee 2006.
- **Listed Buildings** The Plan Area has a substantial number of listed buildings. There are 859 Listed Buildings within the District.

5.4 Natural Heritage: The Plan Area contains a variety of wildlife habitats which support a rich diversity of flora and fauna. There is also a rich marine environment. A number of sites are significant in terms of their natural heritage value, and have national or local designations, including the District's major natural resource, the Sperrin Area of Outstanding Natural Beauty. These natural habitats provide a resource for more specialist tourists and fall into a number of categories:

- **Ramsar Sites** Lough Foyle is an international Ramsar Site.
- **Special Protection Areas (SPAs)** designated under the European Commission Directive on the Conservation of Wild Birds (The Birds Directive). Special Protection Areas within the plan area include Lough Foyle.
- **Special Areas of Conservation (SACs)** These areas are designated by the European Commission Directive on the Conservation of Natural Habitats and of Wild Fauna and Flora as a means of protecting some of the most seriously threatened habitats and species across Europe. River Foyle and Tributaries have been designated as SACs.
- **Areas of Special Scientific Interest (ASSIs)** are areas of land that have been identified by scientific survey as being of the highest degree of conservation value, for example River Faughan and Tributaries, Ness Wood, Banagher Glen. The District has 27 ASSIs.
- **Nature Reserves** A nature reserve is defined as an area of importance for flora, fauna or features of geological or other special interest, which are reserved and managed for conservation and to provide special opportunities for study or research. Within the Plan Area, there are several nature reserves including Ness and Ervey Woods, Killaloo. Nature Reserves. There are 3 National and 4 Local Nature Reserves.
- **Historic Parks, Gardens and Demesnes** HPG&D of our Built Heritage are protected from development which would harm their historic character. The planned landscapes of the 17th Century onwards are protected. HPGD in the

District include Baronscourt, Holy Hill and Moyle House, Ashbrook. Beech Hill, Brook Hall, Brooke Park and St Columb's Park.

5.5 Cross Border Tourism The North West Region Cross Border Group NWRCBG recognises there is a range of issues that are common to both sides of the border and that by working together the region is more likely to address these issues. European Union INTERREG IVA Programme projects include to receive funding is the Inch Levels-Lough Foyle Wildlife Project, which has been awarded €839,880 to deliver two world-class visitor and recreation attractions at Inch Levels in Donegal and at Lough Foyle, north of Derry, over the next 2 years. The project will develop 3.5 km of walkway, install a timber boardwalk and extend the car parking facilities at Inch as well as installing bird hides and a footbridge at Lough Foyle to enable access to this attractive area. In addition to this, the project will aim to establish the entire northwest region as a first class birdlife and environmental destination.

5.6 An example of Cross Border Tourism is International Appalachian Trail (IAT) where 3 sections of the route traverse Derry City & Strabane District Council:

- Glenties to Killeter: 34 Miles/55 KM - This is the second section of the IAT in Ireland, leading from Glenties, past Lough Eske, across the border with Northern Ireland, through Killeter Forest and ending at the village of Killeter.
- Killeter to Gortin: 36 Miles/58KM - Starting at Killeter, this section of the IAT follows quiet country roads, areas of woodland, before picking up the Ulster Way on the slopes of Bolaght Mountain. You then ascend Bessy Bell, where panoramic views of the Sperrins can be enjoyed. The route continues to Gortin Forest Park and Gortin Village.
- Gortin to Moneyneany: 23 Miles /37KM - This section journeys through the heart of the Sperrins- the largest area of upland in Northern Ireland- mainly following quiet roads and tracks. The highlight is the exceptionally scenic Glenelly Valley.

When expansion is complete, the IAT will be the largest trail network, and one of the largest outdoor adventure brands in the world, with a presence in 21 “countries” and 3 continents, and a home market of over 800 million people.

5.7 Other key tourist routes/initiatives with benefits and potential for the District include the North West Passage and the Wild Atlantic Way.

6.0 Conclusion – Tourism in the LDP?

6.1 Under the overarching objectives of the **Community Plan**, the **Council's Tourism Strategy** will inform and help shape the Local Development Plan. By exploring the spatial articulation of the District's tourism needs, the LDP will capitalise on our assets for tourism. It should be supportive of and integral to the overall vision for the District and it needs to be grounded in the concept of sustainable tourism and other policies for sustainability in society. Rather than simple aspirations, it can be brought about through careful land use planning and policies.

6.2 The LDP needs to look at how we can seek to facilitate and develop tourism in the District but also ensure that its location and scale will not impact on our built and natural environmental assets. We need to understand what our key natural and built tourism attractions in the urban and rural areas are and how we can safeguard them in a sustainable manner for future generations.

6.3 **High Quality Design and Landscaping.** The LDP also has a role in securing high quality design and landscaping and integrating tourism provision with the necessary infrastructure. This will ensure that development is sustainable and achievable without damaging those qualities in the environment which are of acknowledged public value and on which tourism itself may depend.

6.4 **Economic Gain.** The LDP will look at where we can facilitate growth in the urban and rural areas and ensure there are sites available to expand and grow our tourism economy. The Local Development Plan needs to consider how investment can bring about maximum economic gain with minimum environmental impact. The LDP will look at potential opportunities where zoning can be explored to include for e.g. riverfront development; rural opportunities; accommodation and attraction development sites.

6.5 **Sustainable Tourism** development is brought about by balancing the needs of tourists and the tourism industry with conserving the tourism asset. The LDP should consider how best to facilitate the growth of sustainable tourism. This will be tailored to the needs and assets of our District and we will engage with relevant stakeholders.

6.6 **Planning Policies.** The LDP will have a key role in managing tourism-related development through planning policies that provide a framework for identifying appropriate development opportunities and safeguarding tourism assets from harmful development. The LDP will review our current policy and consider what scope there is for amending the policies. Further exploration of the policies could consider e.g.

- Should there be policy for specific areas of tourism development or land designated in the District that require further promotion and exploration?
- Should there be land designated for conservation in an attempt to preserve the tourism resources, landscape or heritage of the plan area?

- Are there any tourism resources within the plan area that are undeveloped or not developed at all?
- Are there any areas that require specific types of accommodation i.e. caravan and camping sites, that need land zoned/designations in the LDP.

6.7 LDP Tourism Strategy. In summary the LDP Tourism Strategy should reflect wider government tourism initiatives and should address the following:

- how future tourism demand is best accommodated;
- safeguarding of key tourism assets;
- identification of potential tourism growth areas;
- environmental considerations; and
- contribution of tourism to economic development, conservation and urban regeneration.

6.8 The research findings contained in this paper together with Members views and advice from the relevant parties/consultees have informed the following options which have been taken forward and subjected to Sustainability Appraisal (which incorporates Strategic Environmental Assessment) as part of the Preferred Options Paper (POP) process.

Three strategic planning options have been identified below to address those issues.

	Option 1	Option 2	Option 3
H - Tourism	Identify flagship Tourism sites / areas along with opportunities for dedicated sustainable attractions and associated accommodation. Focus on improved accessibility, place-making and legibility of tourism offer	Plan for further opportunities that emerge, to expand current offer generally	Focus on the protection of our Tourism assets and constrain Tourism development potential

- **Option 1**

Identifies flagship tourism sites for attractions and accommodation to ensure that there are opportunities for dedicated sustainable tourism options over the plan period. Additionally, there would be an emphasis on the wider environment and designing a quality tourism offer for visitors to enjoy.

- **Option 2**

Is to build upon existing supply and plan for further tourism opportunities, being largely reactive

- **Option 3**

Focus on constraining development and the protection of tourism assets.

Appendix

NEW LOCAL GOVERNMENT DISTRICT TOURISM ESTIMATES 2015

LGD	TRIPS	% of NI Trips	NIGHTS	% of NI Nights	SPEND (£)	% of NI Spend	Average spend per trip	Average spend per night	Average number of nights
Antrim & Newtownabbey	204,290	4%	672,902	4%	34,164,529	4%	£167.24	£50.77	3.3
Ards & North Down	376,755	8%	1,397,895	9%	51,013,302	7%	£135.40	£36.49	3.7
Armagh City, Banbridge & Craigavon	149,449	3%	562,866	4%	22,476,581	3%	£150.40	£39.93	3.8
Belfast	1,361,193	29%	4,237,733	27%	278,034,119	37%	£204.26	£65.61	3.1
Causeway Coast & Glens	911,388	20%	3,141,914	20%	136,770,965	18%	£150.07	£43.53	3.4
Derry City & Strabane	223,172	5%	889,416	6%	42,502,028	6%	£190.45	£47.79	4.0
Fermanagh & Omagh	341,051	7%	1,136,816	7%	54,585,277	7%	£160.05	£48.02	3.3
Lisburn & Castlereagh City	130,924	3%	714,336	5%	24,910,212	3%	£190.26	£34.87	5.5
Mid & East Antrim	382,224	8%	1,007,755	7%	45,628,631	6%	£119.38	£45.28	2.6
Mid Ulster	155,708	3%	613,667	4%	22,285,891	3%	£143.13	£36.32	3.9
Newry, Mourne & Down	404,442	9%	1,056,896	7%	47,736,730	6%	£118.03	£45.17	2.6
TOTAL	4,640,596	100%	15,432,195	100%	760,108,265	100%	£163.80	£49.25	3.3

Derry City and Strabane District Council LDP Workshop 7 – Tourism

1.3 NEW LOCAL GOVERNMENT DISTRICT TOURISM ESTIMATES 2013

LGD	TRIPS	% of NI Trips	NIGHTS	% of NI Nights	SPEND (£)	% of NI Spend	Average spend per trip	Average spend per night	Average number of nights	Tourism Jobs*	% NI Tourism jobs	% Local Jobs
Antrim & Newtownabbey	234,264	6%	914,193	6%	43,240,000	6%	£184.58	£47.30	3.9	4,074	7.0	7.4
Ards & North Down	342,685	8%	1,239,892	9%	48,446,867	7%	£141.37	£39.07	3.6	4,595	7.9	12.4
Armagh City, Banbridge & Craigavon	201,334	5%	821,771	6%	21,998,869	3%	£109.27	£26.77	4.1	4,182	7.2	6.1
Belfast	1,123,802	27%	3,658,819	25%	227,189,795	31%	£202.16	£62.09	3.3	17,319	29.8	8.2
Causeway Coast & Glens	704,716	17%	2,347,447	16%	110,137,241	15%	£156.29	£46.92	3.3	4,751	8.2	12.1
Derry City & Strabane	254,315	6%	936,200	6%	46,814,887	6%	£184.08	£50.00	3.7	4,227	7.3	8.4
Fermanagh & Omagh	364,681	9%	1,215,313	8%	86,329,960	12%	£236.73	£71.03	3.3	3,448	5.9	9.0
Lisburn & Castlereagh City	123,727	3%	522,020	4%	24,605,752	3%	£198.87	£47.14	4.2	3,824	6.6	7.4
Mid & East Antrim	251,338	6%	839,952	6%	40,451,130	6%	£160.94	£48.16	3.3	3,678	6.3	8.7
Mid Ulster	141,231	3%	526,674	4%	23,109,188	3%	£163.62	£43.88	3.7	3,165	5.5	6.6
Newry, Mourne & Down	453,109	11%	1,464,543	10%	49,849,323	7%	£110.02	£34.04	3.2	4,780	8.2	9.3
TOTAL	4,195,202	100%	14,486,823	100%	722,164,563	100%	£172.14	£49.85	3.5	58,042	100%	8.4

*Employee jobs in Tourism Characteristic Industries, including tourist accommodation, restaurants, bars and catering services, passenger transport, travel agents, sport, recreation and betting/amusements activities and performing arts. Source: Northern Ireland Census of Employment (NISRA) which is conducted biennially

Data correct as at 21/07/16 (NISRA)

2 LOCAL GOVERNMENT DISTRICT OVERNIGHT TRIPS BY REASON FOR VISIT (AVERAGE 2013-2015)

LGD	Holiday/Pleasure/Leisure			Visiting Friends and Relatives (VFR)			Business			Other		
	Trips	% of all holiday trips	% of LGD trips	Trips	% of all VFR trips	% of LGD trips	Trips	% of all business trips	% of LGD trips	Trips	% of all other trips	% of LGD trips
Antrim & Newtownabbey	74,769	4%	35%	99,521	5%	47%	25,553	6%	12%	13,190	6%	6%
Ards & North Down	173,734	9%	45%	169,925	9%	44%	14,056	3%	4%	29,885	13%	8%
Armagh, Banbridge & Craigavon	34,564	2%	18%	133,402	7%	69%	10,095	2%	5%	16,132	7%	8%
Belfast	496,866	25%	41%	453,775	24%	37%	209,091	50%	17%	57,514	25%	5%
Causeway Coast & Glens	537,463	27%	68%	177,259	10%	22%	30,703	7%	4%	45,515	20%	6%
Derry & Strabane	77,727	4%	33%	104,989	6%	44%	38,803	9%	16%	14,638	6%	6%
Fermanagh & Omagh	161,609	8%	44%	164,253	9%	45%	26,210	6%	7%	12,541	6%	3%
Lisburn & Castlereagh	33,663	2%	27%	70,522	4%	57%	17,766	4%	14%	2,149	1%	2%
Mid & East Antrim	130,253	7%	41%	159,610	9%	50%	15,511	4%	5%	13,185	6%	4%
Mid Ulster	49,527	2%	29%	107,666	6%	63%	8,362	2%	5%	4,669	2%	3%
Newry, Mourne & Down	227,045	11%	48%	212,341	11%	45%	20,473	5%	4%	16,338	7%	3%
TOTAL	1,997,221	100%	44%	1,853,262	100%	41%	416,624	100%	9%	225,754	100%	5%

Data correct as at 21/07/16 (NISRA)

Source: Northern Ireland Statistics & Research Agency

Derry City and Strabane District Council LDP Workshop 7 – Tourism

Examples of a broad range of Tourism across the District (Source: DC&SDC)

Activity	Action Extreme Northern Ireland
Activity(Multi) & Accommodation	Ardmoure House & Stables
ctivity(Multi) & Accommodation	Adventure Tours NI
Activity- Angling/ Hunting/Food- Artesan Producers & Accommodation	Abercorn Estates
Angling- Fish And Tackle	N&M Tackle
Angling- Fish And Tackle	River Mourne Guns And Tackle
Angling- Fish And Tackle	The Bridge Guns & Tackle
Angling- Other	Moyagh Trout Fishery
Arts & Crafts	Artistic Hands
Arts & Crafts	Banba Design & Strabane Craft Collective
Arts & Crafts & Accommodation	Crafty Goings On Studio
Arts & Crafts	Crafty Yarns
Arts & Crafts	Creative Productions Art Gallery
Arts & Crafts	Holy Hill Crafts
	Lilly Annabella
Arts & Crafts	Martin McGrinder- Artist Studio Gallery
Arts & Crafts	Mill Pottery
Arts & Crafts	Tracey O' Neill Art
Arts & Crafts	Urney Creations
Arts & Crafts	Woodside Crafts & Supplies
Attraction & Equestrian	Barrontop Fun Farm
Attraction- Other Social Farm & Arts/Crafts	Bradkeel Social Farm
Attraction- Other Social Farm	Butterlope Farm
Attraction & Restaurant	Sion Stables
Attraction	Gray Printers, Strabane
Attraction	The Wilson Ancestral Home, Dergalt-Strbane
	Ashlee Riding Centre
Equestrian	Ballyskeagh Stables
Equestrian	Tullywhisker Riding School
Golf	Hill Valley Golf Centre
Golf	Newtownstewart Golf Club
Golf	Strabane Golf Club
Guiding	About The Sperrins
	City Of Derry Equestrian Centre
	Ardmore Equestrian Centre
	Claudy Cycles
	Far And Wild (Cycle Sperrins Parent Company)
	Shamrock Adventures
	Landscape and Countryside Tours
	Oakfire Adventures
	Campsie Karting
	Oaks Fishery
	City Of Derry Golf Club
	Faughan Valley Golf Club
	Foyle Golf Centre

Derry City and Strabane District Council LDP Workshop 7 – Tourism

	City Walls and City Sightseeing McCrossan Walking Tours
	Cutting Edge Helicopters Ltd
	http://www.canoeni.com/where-to-paddle/white-water/

Types of Accommodation in the District (Source: DC&SDC)

Category	Location	Name
Hotel	City - Co.Derry/Londonderry	Bishop's Gate Hotel
Hotel	City - Co.Derry/Londonderry	<u>Derry City Travelodge</u>
Hotel	City - Co.Derry/Londonderry	<u>Everglades Hotel</u>
Hotel	City - Co.Derry/Londonderry	<u>Maldron Hotel Derry</u>
Hotel	City - Co.Derry/Londonderry	<u>Premier Inn Hotel & Brewers Fayre</u>
Hotel	City - Co.Derry/Londonderry	<u>Ramada Da Vinci's Hotel, Derry</u>
Hotel	City - Co.Derry/Londonderry	<u>The City Hotel Derry</u>
Hotel	City - Co.Derry/Londonderry	<u>Waterfoot Hotel</u>
Hotel	Rural : Convenient To City- Co.Derry/Londonderry	<u>Beech Hill Country House Hotel</u>
Hotel	Rural : Convenient To City- Co.Derry/Londonderry	<u>The Belfray Country Inn</u>
Hotel	Campsie- Co.Derry/Londonderry	<u>Best Western Plus White Horse Hotel</u>
Hotel	Strabane- Co.Tyrone	<u>Fir Trees Hotel</u>
Guest House	City - Co.Derry/Londonderry	- <u>Clarence House</u>
Guest House	City - Co.Derry/Londonderry	<u>Iona Inn</u>
Guest House	Castledearg- Co.Tyrone	<u>Derg Arms</u>
Guest Accommodation	City - Co.Derry/Londonderry	- <u>Chamberlain House</u>
Guest Accommodation	Dungiven	<u>The Dolphin</u>
Guest Accommodation	Newtownstewart- Co.Tyrone	- <u>Castle Inn</u>
Bed & Breakfast	City - Co.Derry/Londonderry	<u>Abbey Bed & Breakfast</u>
Bed & Breakfast	City - Co.Derry/Londonderry	<u>Amore B&B</u>
Bed & Breakfast	City - Co.Derry/Londonderry	<u>Angel House</u>
Bed & Breakfast	City - Co.Derry/Londonderry	<u>Arkle House</u>
Bed & Breakfast	City - Co.Derry/Londonderry	<u>Ashgrove Villa B&B</u>

Derry City and Strabane District Council LDP Workshop 7 – Tourism

Bed & Breakfast	City - Co.Derry/Londonderry	<u>Bon Accord Bed & Breakfast</u>
Bed & Breakfast	City - Derry/Londonderry	<u>Castlegregory Bed and Breakfast</u>
Bed & Breakfast	City - Co.Derry/Londonderry	<u>Cathedral View</u>
Bed & Breakfast	City - Derry/Londonderry	<u>Caw Cottage</u>
Bed & Breakfast	City - Co.Derry/Londonderry	<u>City Centre Bed & Breakfast</u>
Bed & Breakfast	City - Co.Derry/Londonderry	<u>Culmore Cottage</u>
		-
Bed & Breakfast	City - Co.Derry/Londonderry	<u>Derryowen</u>
Bed & Breakfast	City - Co.Derry/Londonderry	<u>Elagh View</u>
Bed & Breakfast	City - Co.Derry/Londonderry	<u>Elaghvale</u>
Bed & Breakfast	City - Co.Derry/Londonderry	<u>Groarty House</u>
Bed & Breakfast	City - Co.Derry/Londonderry	<u>Groarty Manor</u>
Bed & Breakfast	City - Co.Derry/Londonderry	<u>Hatmore Bed & Breakfast</u>
Bed & Breakfast	City - Derry/Londonderry	<u>Laburnum Lodge</u>
Bed & Breakfast	City - Co.Derry/Londonderry	<u>Le Mons B&B</u>
Bed & Breakfast	City - Co.Derry/Londonderry	<u>Nightingale House</u>
Bed & Breakfast	City - Co.Derry/Londonderry	<u>Number 8</u>
Bed & Breakfast	City - Derry/Londonderry	<u>Number 8 The Townhouse</u>
Bed & Breakfast	City - Co.Derry/Londonderry	<u>Oak Grove B&B</u>
Bed & Breakfast	City - Co.Derry/Londonderry	<u>Pennyburn Bed & Breakfast</u>
Bed & Breakfast	City - Co.Derry/Londonderry	<u>Phoenix B&B</u>
Bed & Breakfast	City - Derry/Londonderry	<u>Princes House</u>
Bed & Breakfast	City - Co.Derry/Londonderry	<u>Rose Park House</u>
Bed & Breakfast	City - Co.Derry/Londonderry	<u>Roslea</u>
Bed & Breakfast	City - Co.Derry/Londonderry	<u>Serendipity House</u>
Bed & Breakfast	City - Derry/Londonderry	<u>Templegrove Bed and Breakfast</u>
Bed & Breakfast	City - Co.Derry/Londonderry	<u>The Merchants House</u>
Bed & Breakfast	City - Co.Derry/Londonderry	<u>The Saddlers House</u>
Bed & Breakfast	City - Co.Derry/Londonderry	<u>The Venue</u>
Bed & Breakfast	City - Co.Derry/Londonderry	<u>Troy Hall</u>
Bed & Breakfast	City - Co.Derry/Londonderry	<u>Victoria Gate B & B</u>
Bed & Breakfast	Rural : Convenient To City- Co.Derry/Londonderry	<u>Five Oaks</u>
Bed & Breakfast	Rural : Convenient To City- Co.Derry/Londonderry	<u>Heathside B & B</u>
Bed & Breakfast	Ardmore- Co.Derry/Londonderry	Larchmount House
Bed & Breakfast	Eglinton- Co.Derry/Londonderry	<u>Banks Of The Faughan Motel</u>

Derry City and Strabane District Council LDP Workshop 7 – Tourism

Bed & Breakfast	Eglinton- Co.Derry/Londonderry	<u>Lafferty Bed & Breakfast</u>
Bed & Breakfast	Eglinton- Co.Derry/Londonderry	<u>Lillikoi Bed & Breakfast</u>
Bed & Breakfast	Eglinton- Co.Derry/Londonderry	<u>The Manor House</u>
Bed & Breakfast	New Buildings- Co.Derry/Londonderry	<u>Edgewater Bed & Breakfast</u>
Bed & Breakfast	Aghyaran- Co.Tyrone	<u>Ardmourne House And Stables</u>
Bed & Breakfast	Castleberg- Co.Tyrone	<u>Ardgort House</u>
Bed & Breakfast	Castleberg- Co.Tyrone	<u>Hy-Brasail</u>
Bed & Breakfast	Dunamanagh - Co.Tyrone	<u>Beau Vista</u>
Bed & Breakfast	Killeter- Co.Tyrone	<u>Glen House</u>
Bed & Breakfast	Newtownstewart- Co.Tyrone	<u>Abercorn Arms</u>
Bed & Breakfast	Newtownstewart- Co.Tyrone	<u>Crosh Lodge</u>
Bed & Breakfast	Newtownstewart (Drumquin) - Co.Tyrone	<u>McGuires Country House</u>
Bed & Breakfast	Sion Mills- Co.Tyrone	<u>The Willows B&B</u>
Bed & Breakfast	Strabane- Co.Tyrone	- <u>Beech Tree House</u>
Hostel	City - Co.Derry/Londonderry	- <u>Derry City Independent Hostel</u>
Hostel	City - Co.Derry/Londonderry	<u>Fairman House</u>
Hostel	City - Co.Derry/Londonderry	<u>Hostel Connect</u>
Hostel	City - Co.Derry/Londonderry	<u>St Columbs Park House</u>
Campus Accommodation	City - Co.Derry/Londonderry	<u>Duncreggan Student Village</u>
Self Catering	City - Co.Derry/Londonderry	<u>28 Miller Street</u>
Self Catering	City - Co.Derry/Londonderry	<u>Abercorn House</u>
Self Catering	City - Co.Derry/Londonderry	<u>Brookhill House</u>
Self Catering	City - Co.Derry/Londonderry	<u>BT48 Apartments (SC Establishment)</u>
Self Catering	City - Co.Derry/Londonderry	<u>Cathedral Cottage</u>
Self Catering	City - Co.Derry/Londonderry	<u>Cedar Street</u>
Self Catering	City - Co.Derry/Londonderry	<u>Clarendon Apartments</u>
Self Catering	City - Co.Derry/Londonderry	- <u>Darcus Cottage</u>
Self Catering	City - Co.Derry/Londonderry	- <u>Elaghvale Lodge</u>
Self Catering	City -Co.Derry/Londonderry	<u>Grove Place</u>
Self Catering	City - Co.Derry/Londonderry	<u>Hogg & Mitchells (SC Establishment)</u>
Self Catering	City - Co.Derry/Londonderry	<u>Marlborough House</u>
Self Catering	City - Co.Derry/Londonderry	<u>Oak Villa</u>

Derry City and Strabane District Council LDP Workshop 7 – Tourism

Self Catering	City - Co.Derry/Londonderry-	-
Self Catering	City - Co.Derry/Londonderry	<u>Riverview Penthouse</u>
Self Catering	City - Co.Derry/Londonderry-	<u>Rose Cottage</u>
Self Catering	City - Co.Derry/Londonderry	<u>The Brewsters</u>
Self Catering	Rural : Convenient To City- Co.Derry/Londonderry	<u>Trafalgar Court</u>
Self Catering	Rural : Convenient To City- Co.Derry/Londonderry	<u>Drumcorn Farm Cottage</u>
Self Catering	Rural : Convenient To City- Co.Derry/Londonderry	<u>Gatelodge Cottage</u>
Self Catering	Rural : Convenient To City- Co.Derry/Londonderry	<u>Glenash Chalets</u>
Self Catering	Rural : Convenient To City- Co.Derry/Londonderry	<u>Hillfarm House Self-Catering</u>
Self Catering	Rural : Convenient To City- Co.Derry/Londonderry	<u>Landstewards House</u>
Self Catering	Campsie- Co.Derry/Londonderry	<u>Avish Cottage</u>
Self Catering	Drumahoe- Co.Derry/Londonderry	<u>Derry Farm Cottages (SC Establishment)</u>
Self Catering	Drumahoe- Co.Derry/Londonderry	<u>Faughan House</u>
Self Catering	Drumahoe- Co.Derry/Londonderry	<u>Glendara House</u>
Self Catering	Claudy- Co.Derry/Londonderry	<u>Ingfield Cottage</u>
Self Catering	Eglinton- Co.Derry/Londonderry	<u>Templemoyle Cottages (SC Establishment)</u>
Self Catering	Park- Co.Derry/Londonderry	<u>Rio Grande Apartments</u>
Self Catering	Park- Co.Derry/Londonderry	<u>Tammy Lodge</u>
Self Catering	Park- Co.Derry/Londonderry	<u>The Coach House, Learmount</u>
Self Catering	Aghyaran- Co.Tyrone	<u>Ardarver Cottage</u>
Self Catering	Ardstraw- Co.Tyrone	<u>Adventure Tours NI</u>
Self Catering	Ardstraw- Co.Tyrone	<u>Ardstraw Barn</u>
Self Catering	Ardstraw- Co.Tyrone	<u>Derg View</u>
Self Catering	Artigarvan- Co.Tyrone	<u>Ballyskeagh Farmhouse</u>
Self Catering	Castleberg- Co.Tyrone	<u>Derg Valley Apartments</u>
Self Catering	Castleberg- Co.Tyrone	<u>Creevy Lodge</u>
Self Catering	Castleberg- Co.Tyrone	<u>Jadean House Self-Catering</u>
Self Catering	Castleberg- Co.Tyrone	<u>The Forge</u>
Self Catering	Clady- Co.Tyrone	<u>Finn Valley Cottages (SC Establishment)</u>
Self Catering	Cranagh- Co.Tyrone	<u>Glenelly Cottages</u>
Self Catering	Newtownstewart- Co.Tyrone	<u>Grange Court (SC Establishment)</u>
Self Catering	Newtownstewart- Co.Tyrone	<u>Hallow Cottage</u>
Self Catering	Newtownstewart- Co.Tyrone	<u>The Governor's Lodge & The Clock Tower (SC Establishment)</u>
Self Catering	Plumbridge- Co.Tyrone	<u>Ballynasollus Cottage</u>
Self Catering	Plumbridge- Co.Tyrone	<u>Dolly's Brae</u>

Derry City and Strabane District Council LDP Workshop 7 – Tourism

Self Catering	Plumbridge- Co.Tyrone	<u>Glenelly Cottages</u>
Self Catering	Plumbridge- Co.Tyrone	- <u>Glenelly Road Self Catering</u>