

THE NORTH WEST TRANSPORT PLAN

DRAFT LOCAL TRANSPORT STUDY

ANNEX D - DERRY CITY AND STRABANE

DISTRICT COUNCIL TRANSPORT

EVIDENCE BASE

NOVEMBER 2019



Contents

Section 1 – Regional Connectivity by Road and Public Transport.....	1
Figure 1 – OSNI Map of NI Road and Rail Transport Network	2
Figure 2a – Map of Travel Time by Car from Derry at AM Peak Speed	3
Figure 2b – Map of Travel Time by Car from Strabane at AM Peak Speed	4
Figure 3a – Map of Travel Time by Public Transport from Derry from 7:00am	5
Figure 3b – Map of Travel Time by Public Transport from Strabane from 7:00am	6
Figure 4 - Map of Travel Time by Public Transport from Derry City and Strabane District Council to Health Facilities during AM Peak	7
Section 2 – Urban Walking and Cycling Infrastructure and Bus Services.....	8
Figure 5 – Map of Pedestrian Infrastructure in Strabane – Footway Breaks	9
Figure 6 – Map of Pedestrian Infrastructure in Strabane – Crossings by Type and Footway Widths	10
Figure 7 – Map of Cycling Infrastructure in Strabane	11
Figure 8 – Strabane Town Bus Services	12
Section 3 – Travel to Work Destinations	13
Figure 9a – Map of Percentage of Travel to Work Journeys from Derry to other LGDs (in 2011)	14
Figure 9b – Map of Percentage of Travel to Work Journeys from Strabane to other LGDs (in 2011)	15
Section 4 – Modal Choice for Journeys to Work and Education across the Council Area	16
Figure 10 – Chart of Modal Choice for Journey to Work in Derry City and Strabane District Council	17
Figure 11 – Graph of Modal Choice for Journey to Work by Distance in Derry City and Strabane District Council	18
Figure 12 – Chart of Modal Choice for Journey to Education in Derry City and Strabane District Council.....	19
Figure 13 – Graph of Modal Choice for Journey to Education by Distance in Derry City and Strabane District Council	20
Section 5 – Road Network Speeds at Peak and Off-Peak Time Period	21
Figure 14 – Map of Average Off Peak Speeds (mph) for Roads in Derry City and Strabane District Council.....	22
Figure 15 – Map of Average Peak Speeds (mph) for Roads in Derry City and Strabane District Council.....	23
Section 6 – Road Collision History	24
Table 1a – Number of Road Traffic Casualties by Severity and Road User Type in Derry, 2007-2016	25
Table 1b – Number of Road Traffic Casualties by Severity and Road User Type in Strabane, 2007-2016	26
Section 7 – Parking Provision	27
Figure 16 – Map of Parking Provision Locations in Strabane.....	28
Table 2 – Off-Street Parking Provision by Spaces and Type in Strabane.....	29

Table 3a – On-Street Parking Provision in Strabane	30
--	----

Section 1 – Regional Connectivity by Road and Public Transport

Figure 1 – OSNI Map of NI Road and Rail Transport Network

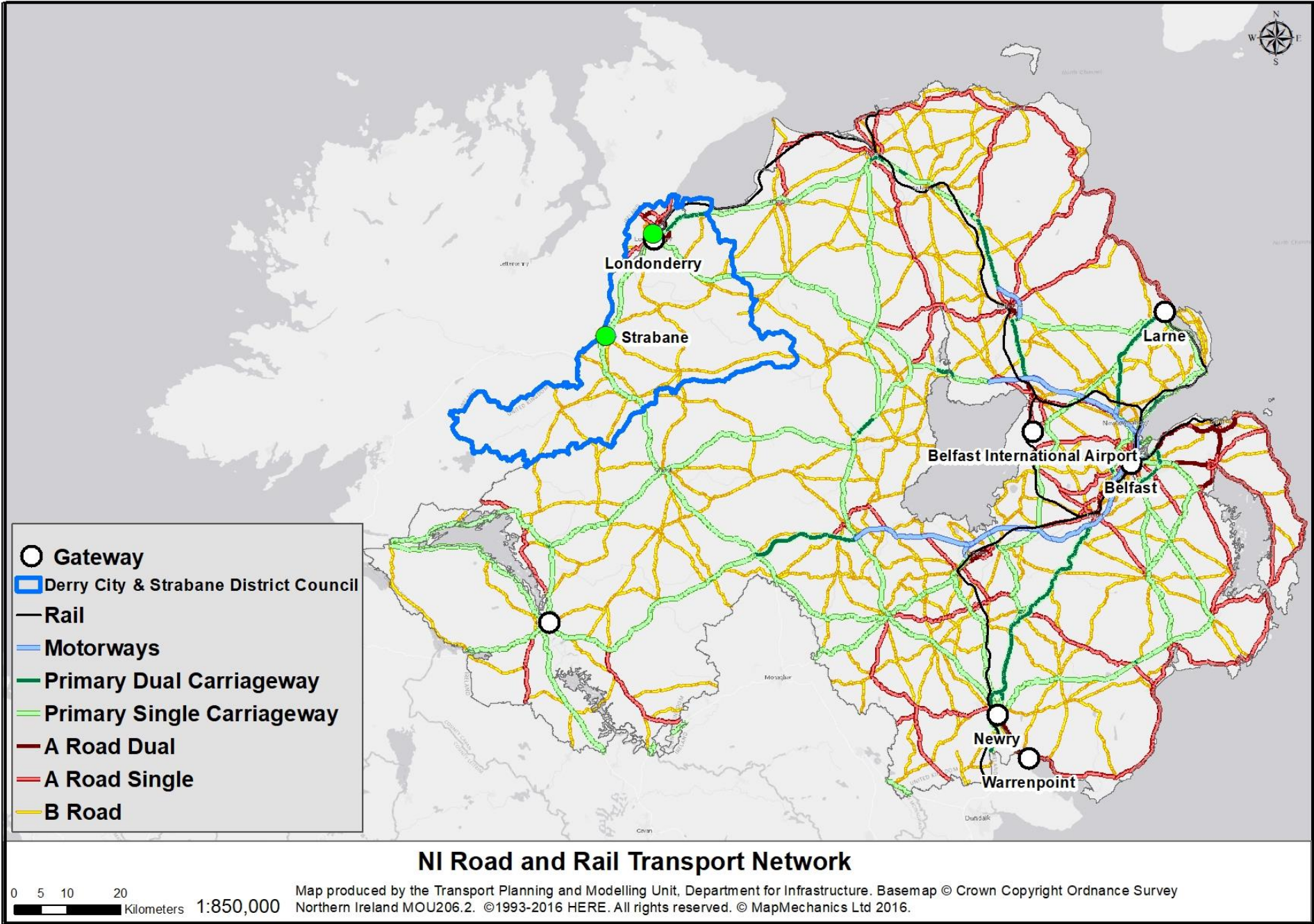


Figure 2a – Map of Travel Time by Car from Derry at AM Peak Speed

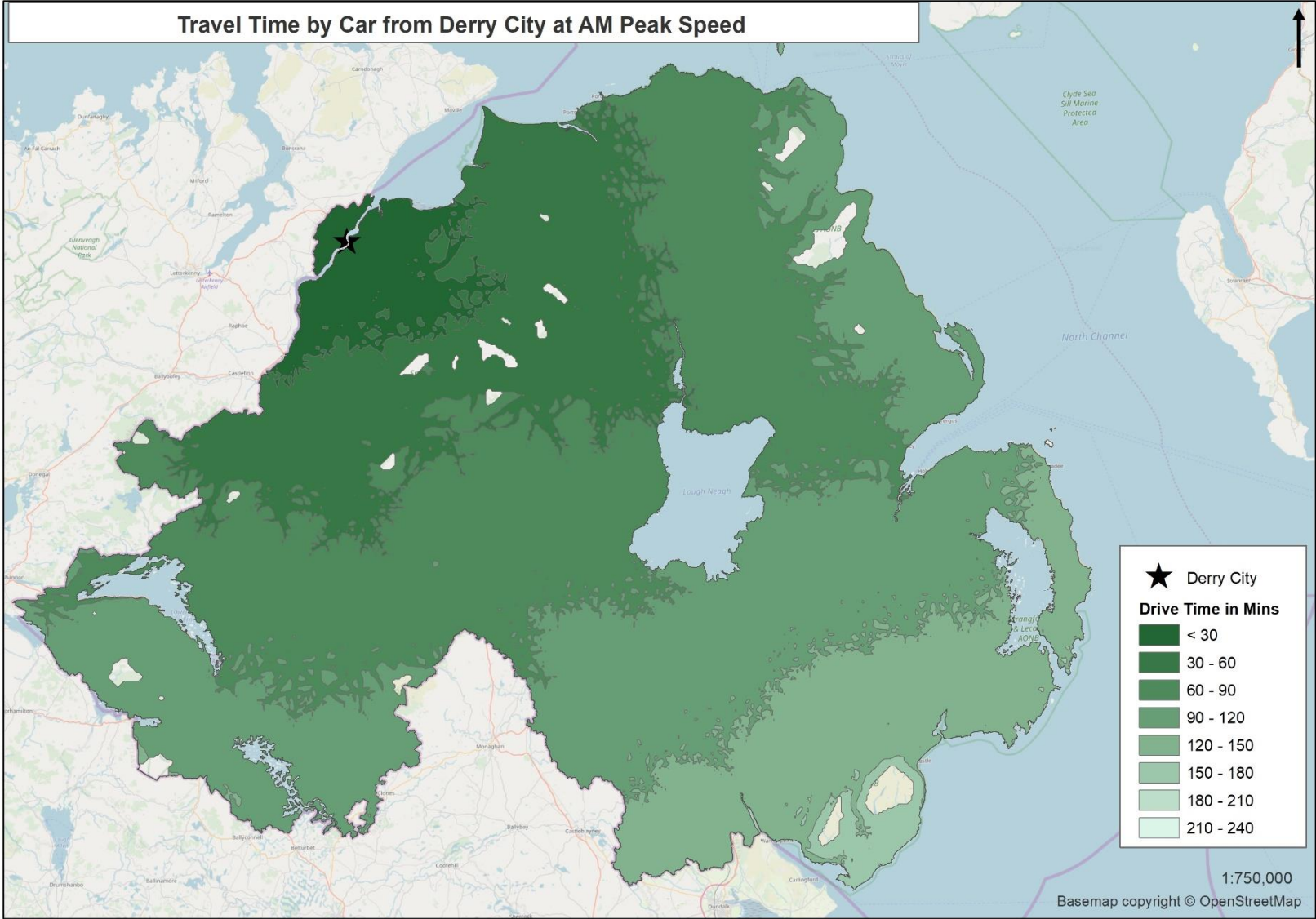


Figure 2b – Map of Travel Time by Car from Strabane at AM Peak Speed

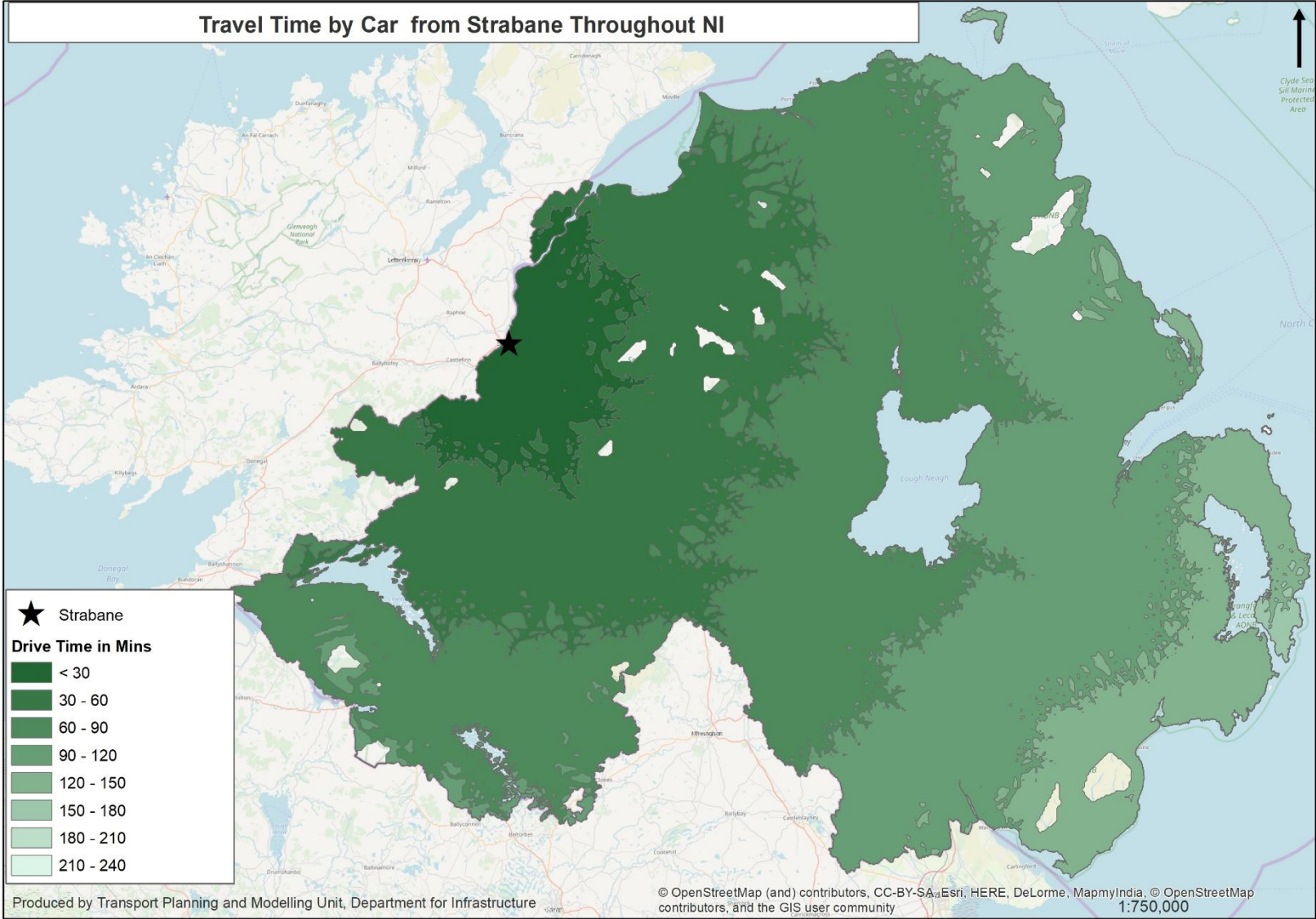


Figure 3a – Map of Travel Time by Public Transport from Derry from 7:00am

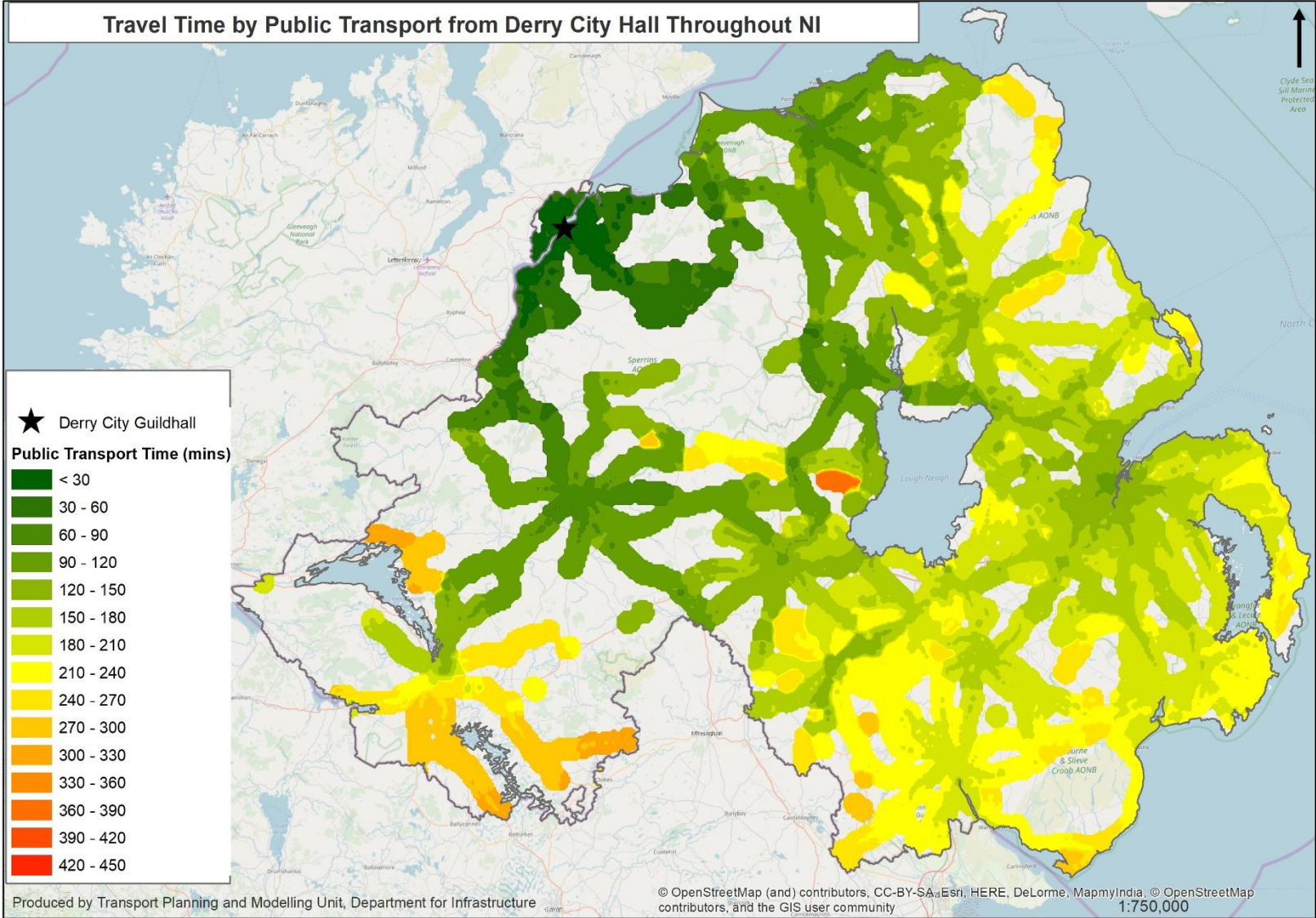


Figure 3b – Map of Travel Time by Public Transport from Strabane from 7:00am

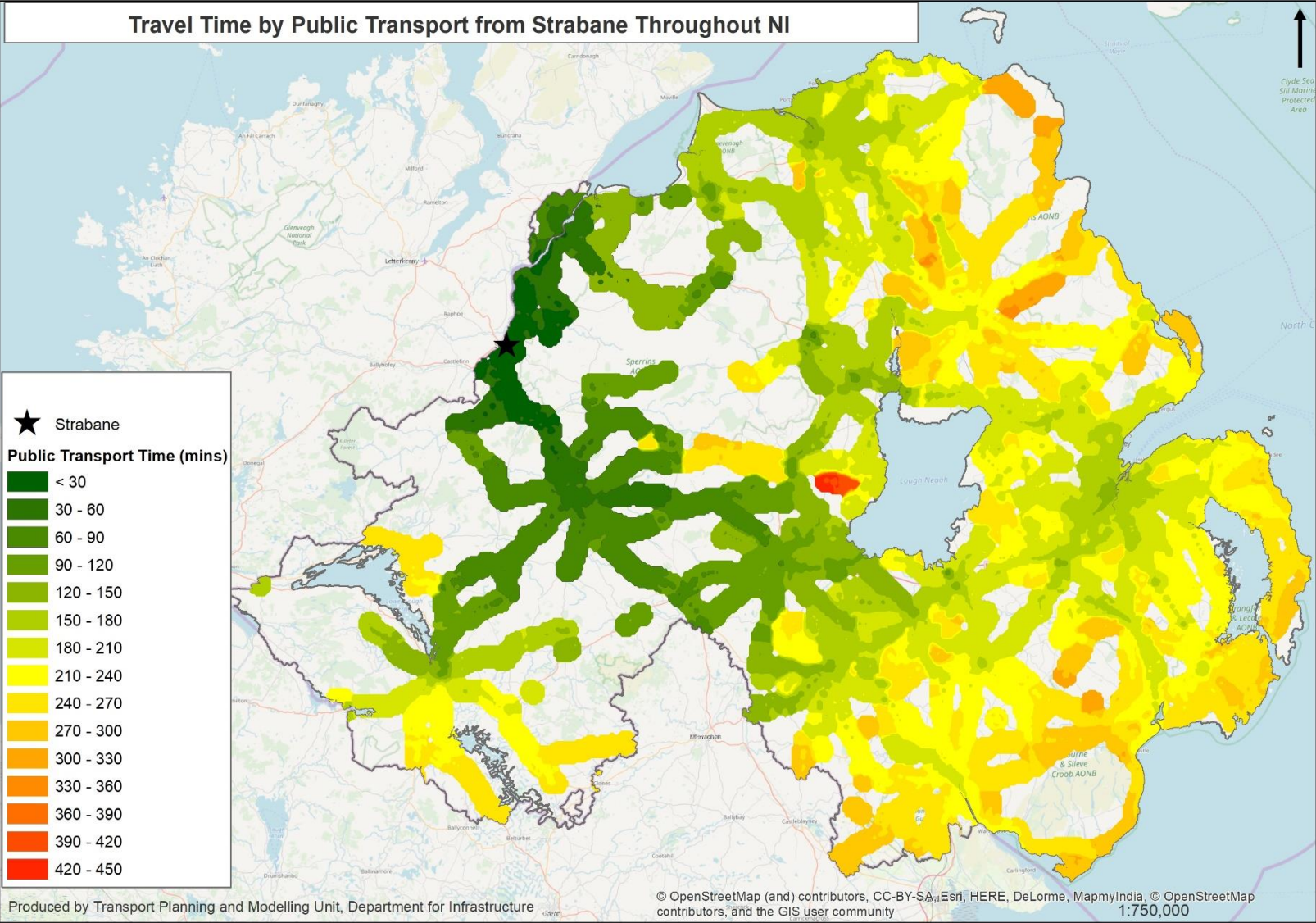
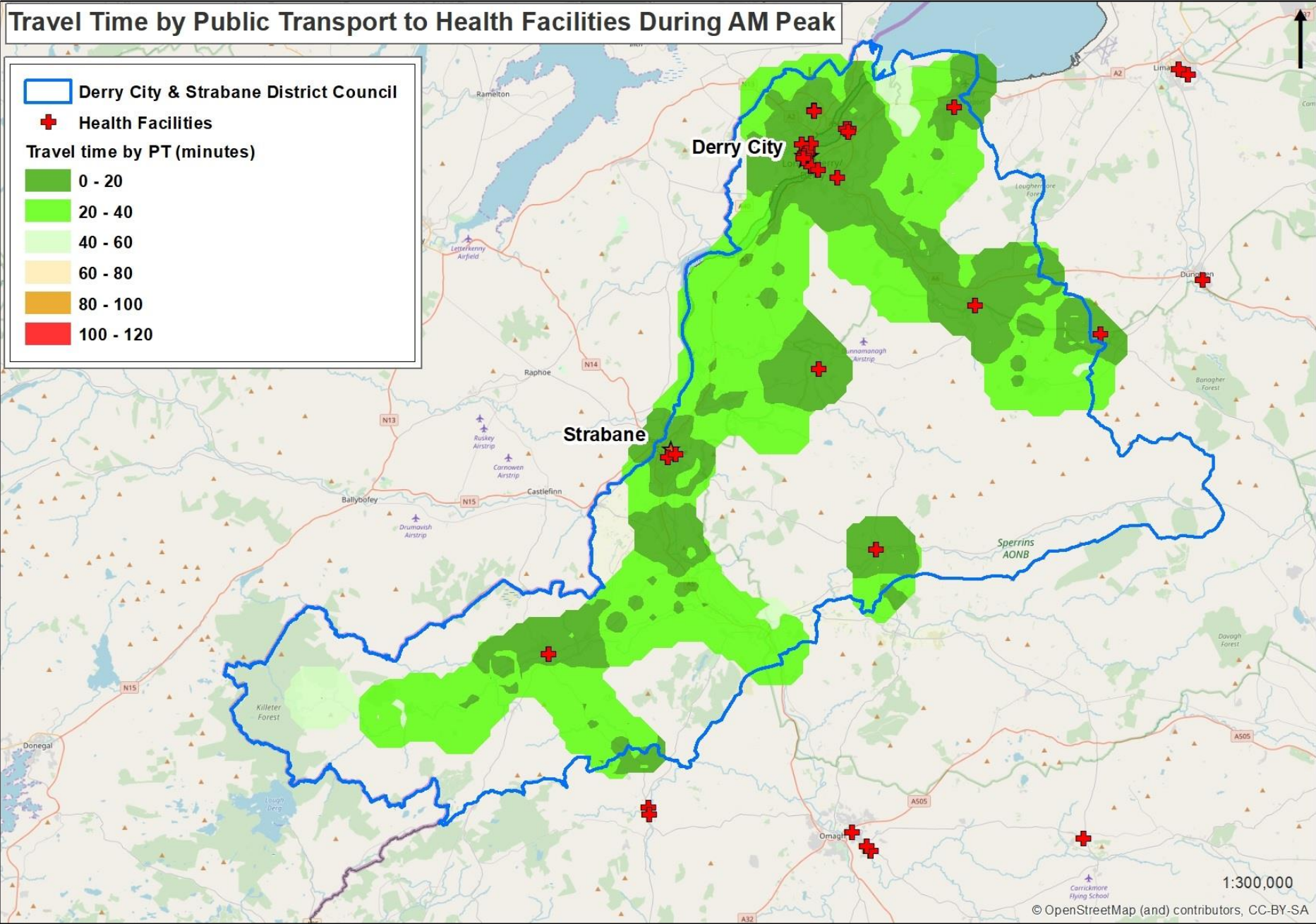


Figure 4 - Map of Travel Time by Public Transport from Derry City and Strabane District Council to Health Facilities during AM Peak



Section 2 – Urban Walking and Cycling Infrastructure and Bus Services

Figure 5 – Map of Pedestrian Infrastructure in Strabane – Footway Breaks

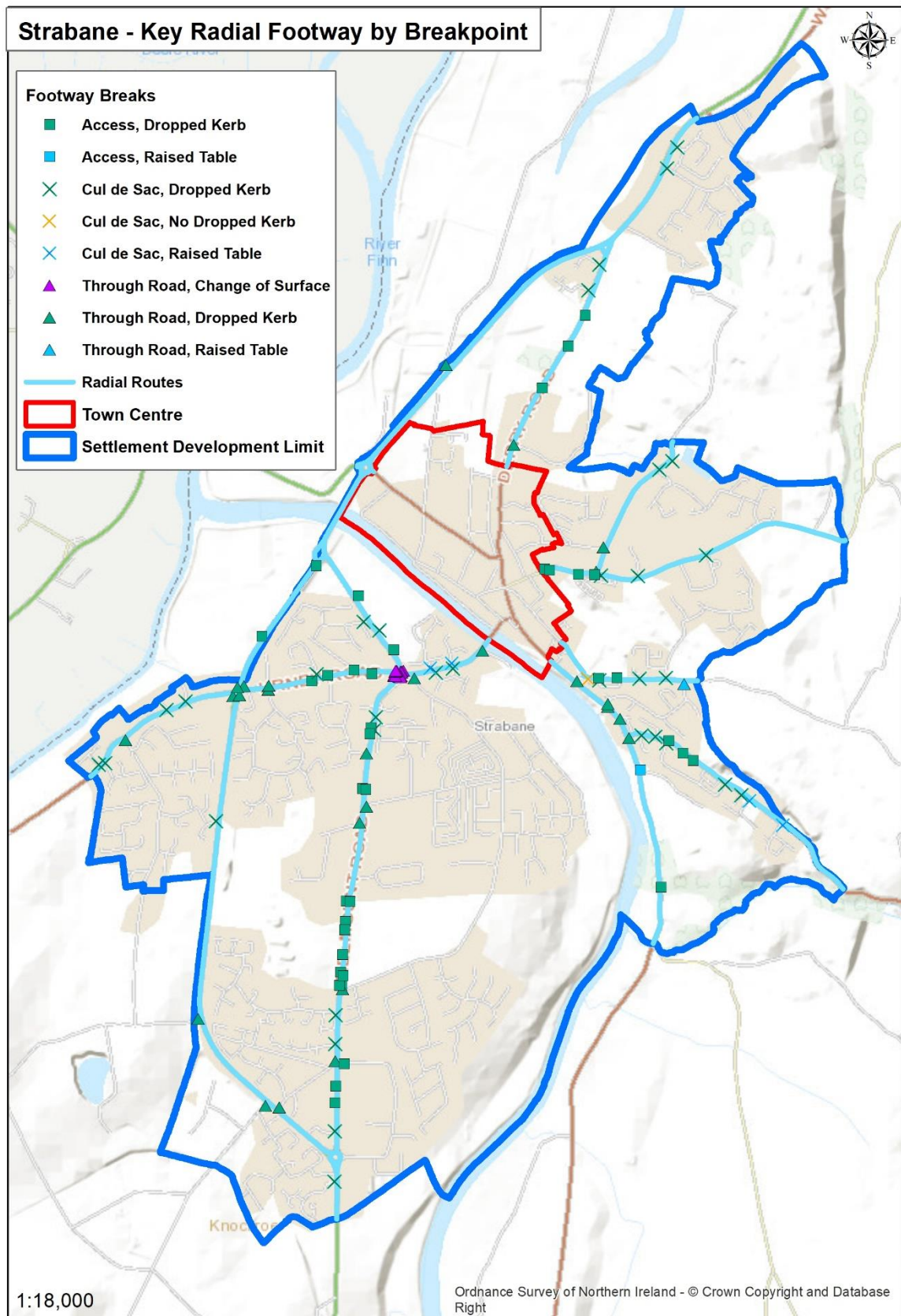


Figure 6 – Map of Pedestrian Infrastructure in Strabane – Crossings by Type and Footway Widths

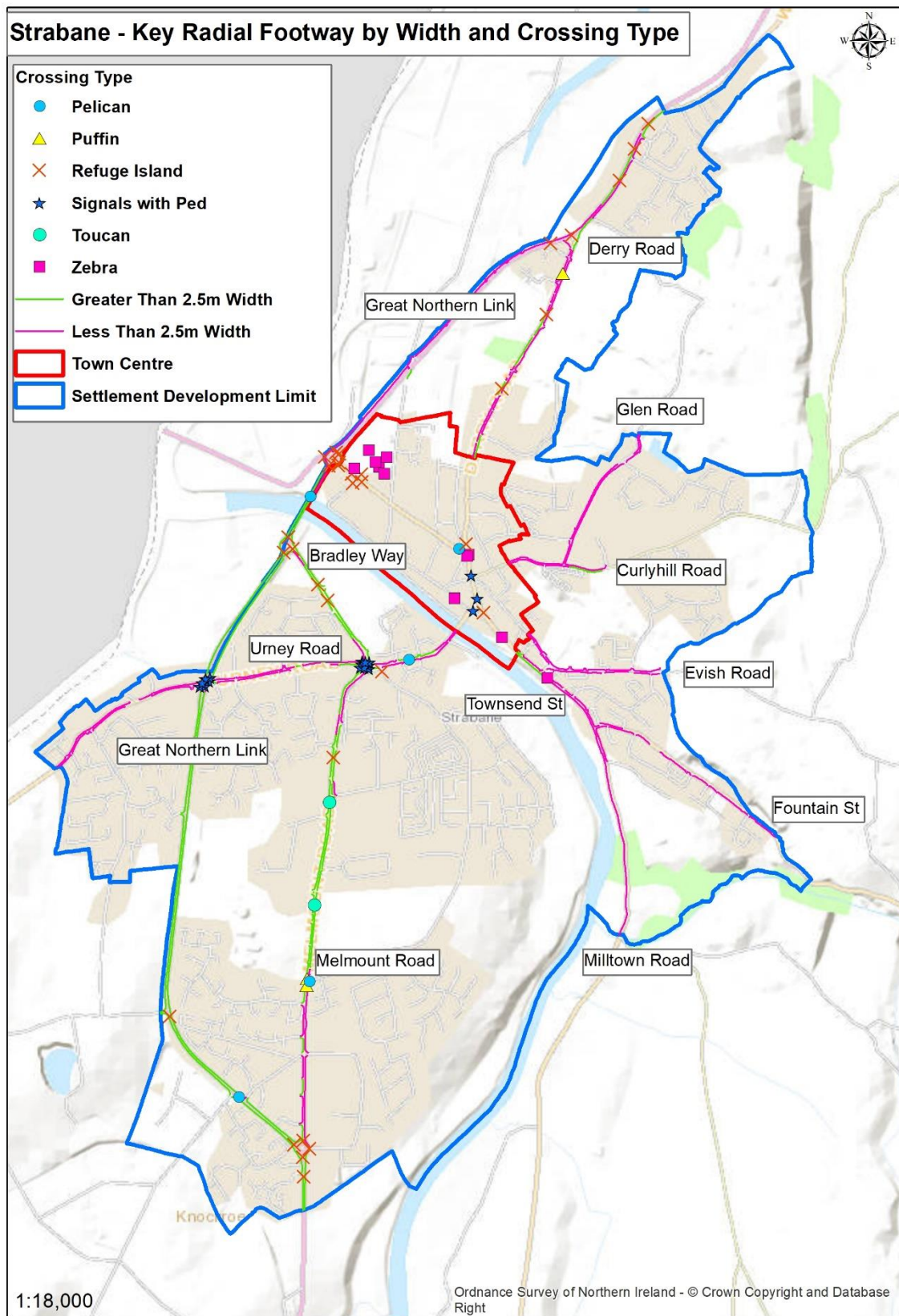


Figure 7 – Map of Cycling Infrastructure in Strabane

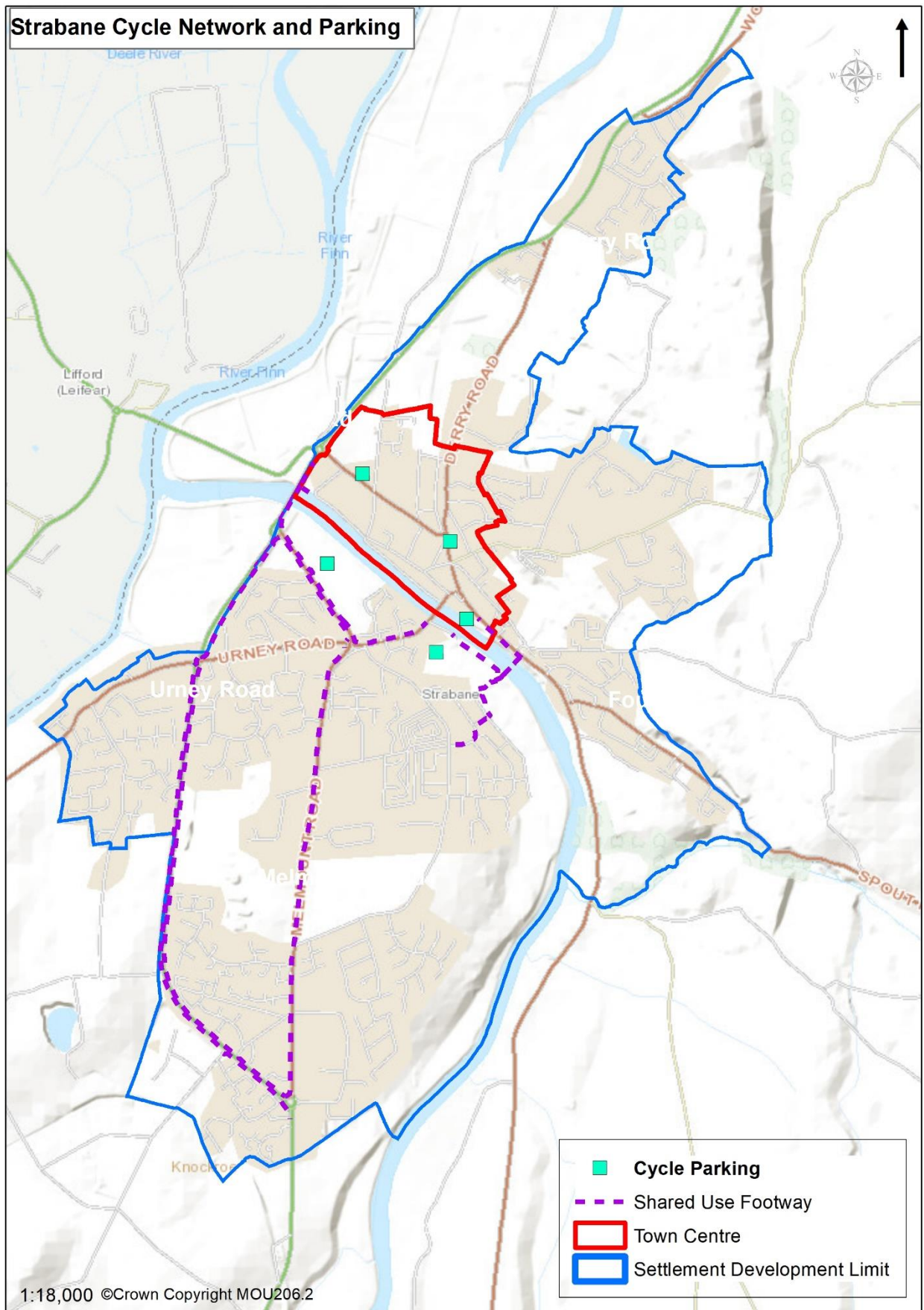
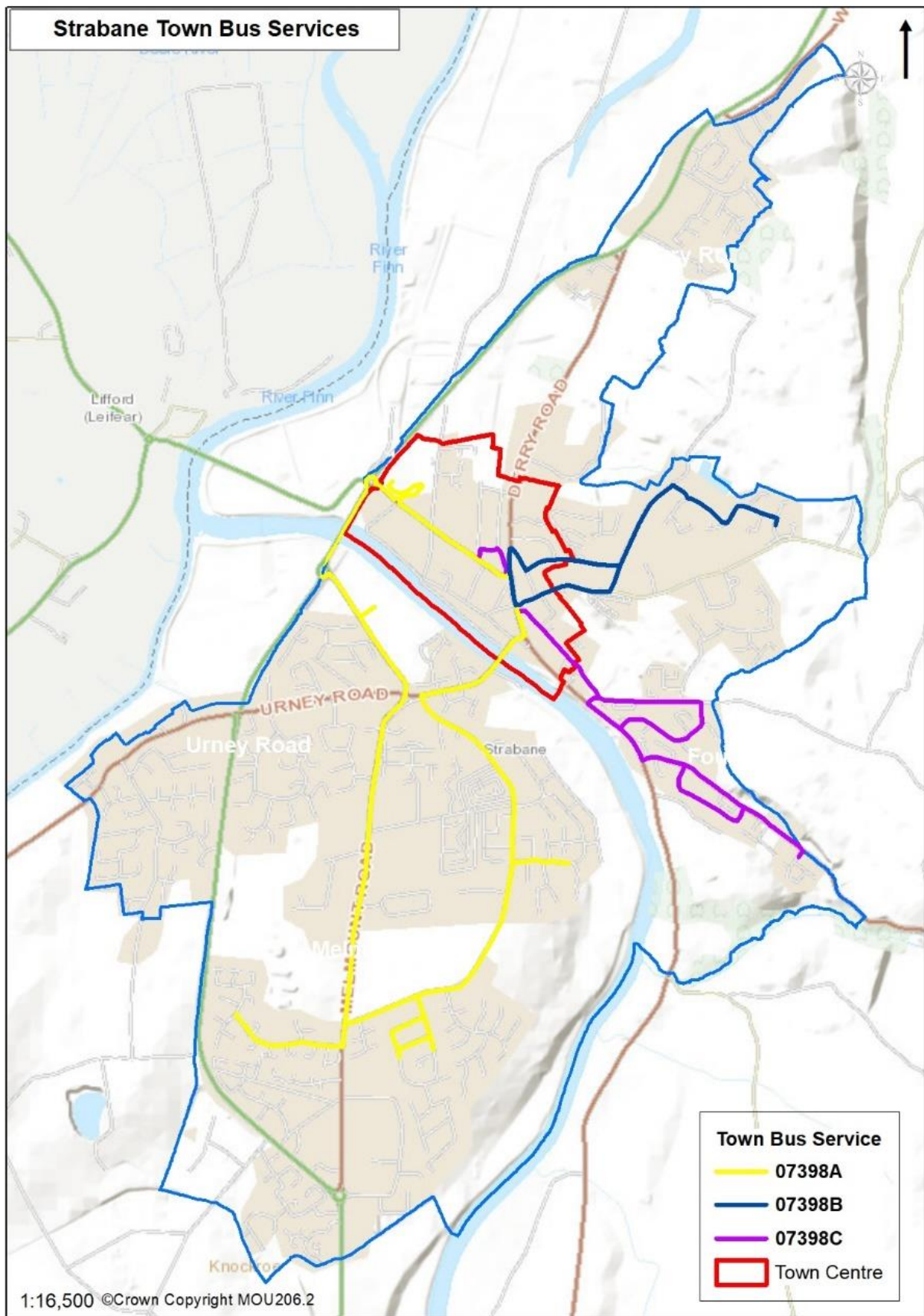


Figure 8 – Strabane Town Bus Services



Section 3 – Travel to Work Destinations

Figure 9a – Map of Percentage of Travel to Work Journeys from Derry to other LGDs (in 2011)

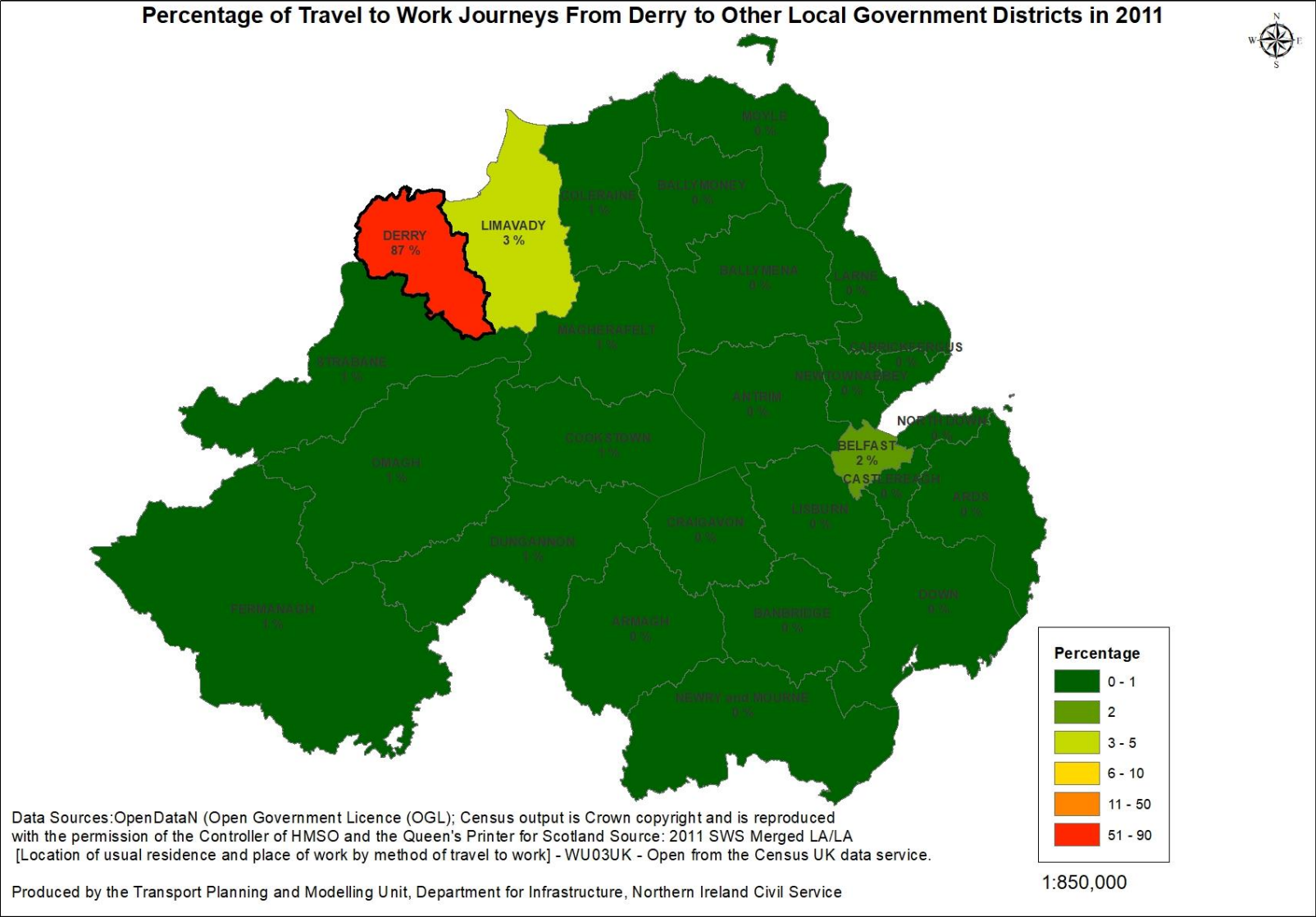
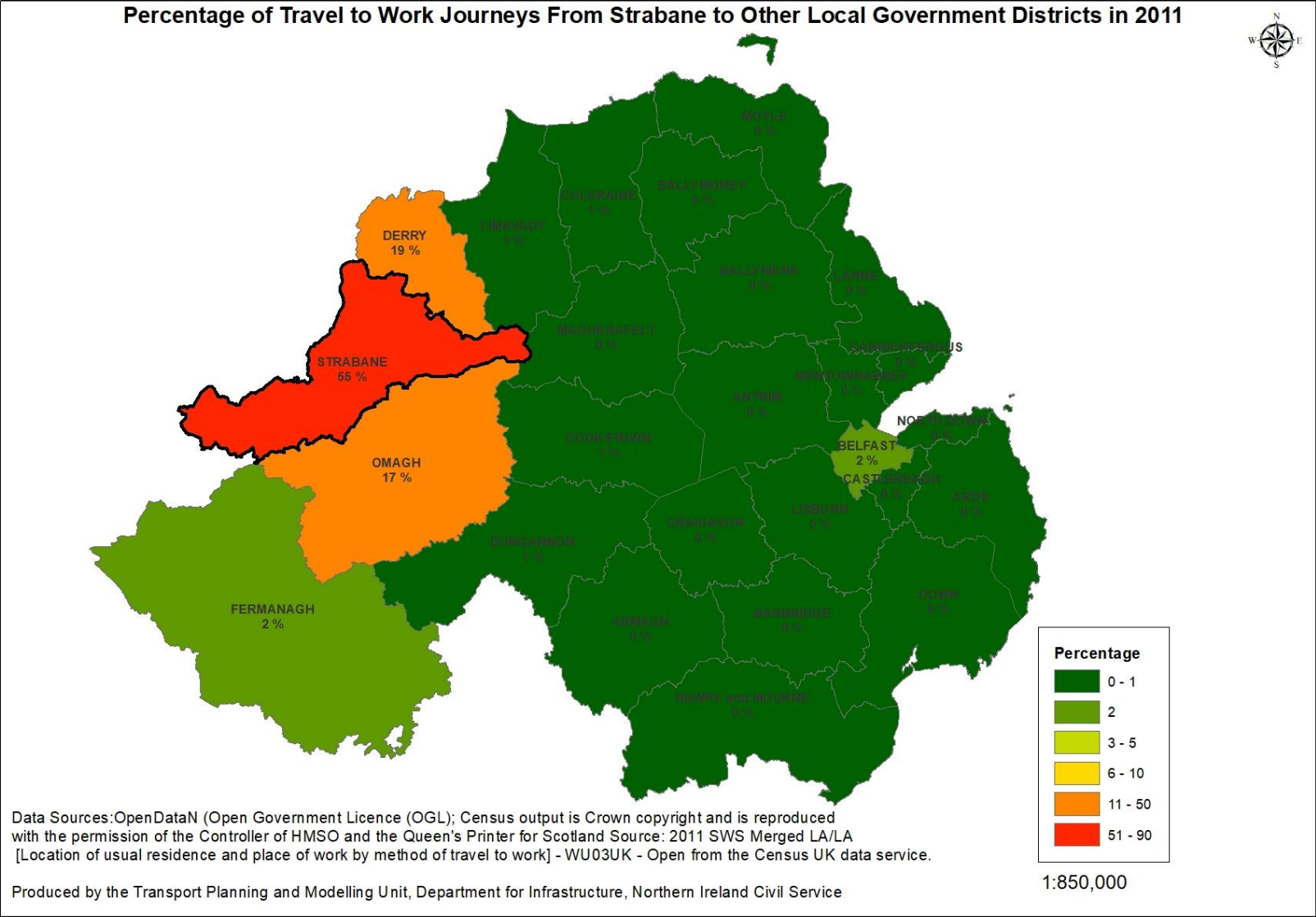
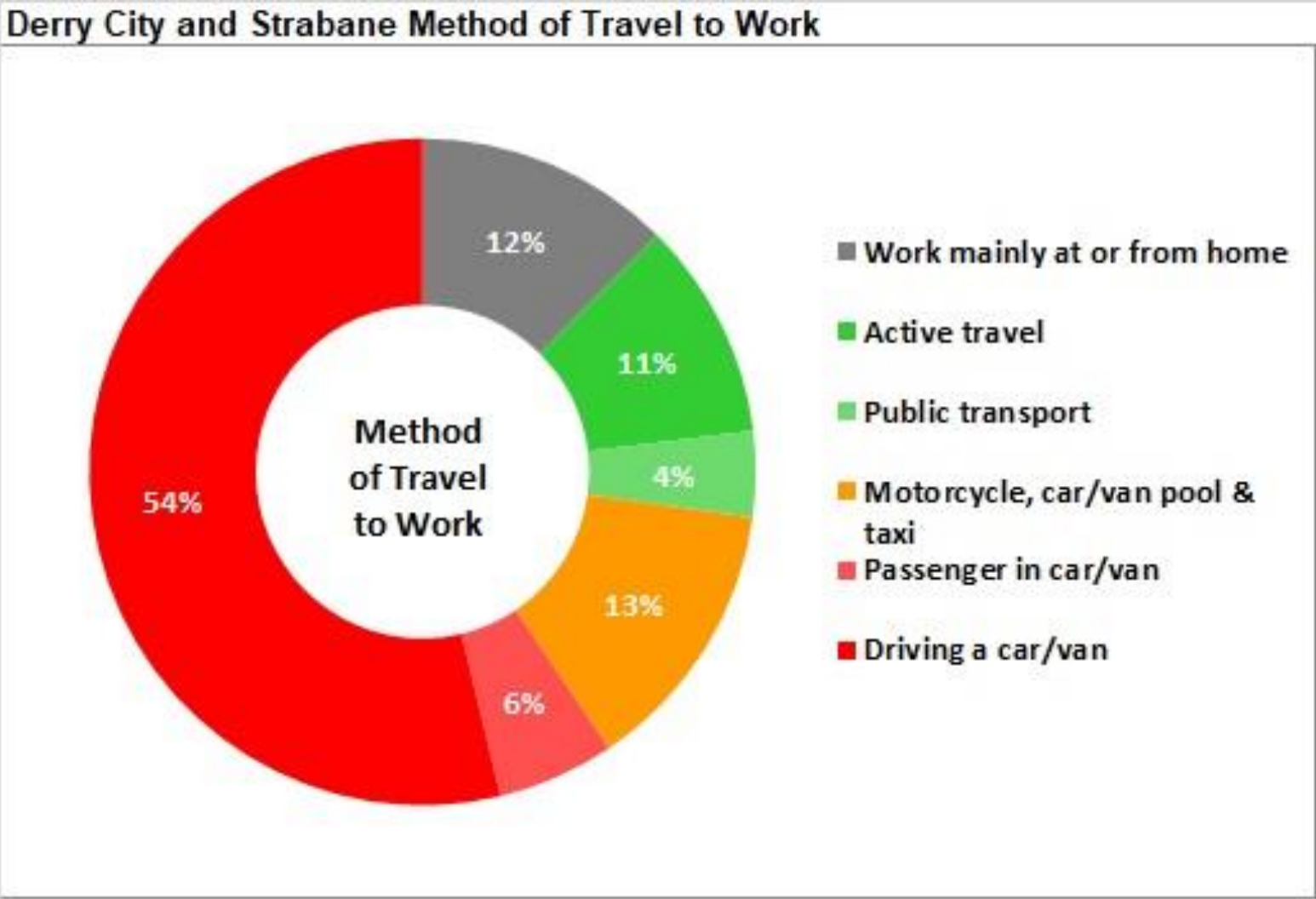


Figure 9b – Map of Percentage of Travel to Work Journeys from Strabane to other LGDs (in 2011)



Section 4 – Modal Choice for Journeys to Work and Education across the Council Area

Figure 10 – Chart of Modal Choice for Journey to Work in Derry City and Strabane District Council



* 'Other method' of travel has not been presented in the chart.

Figure 11 – Graph of Modal Choice for Journey to Work by Distance in Derry City and Strabane District Council

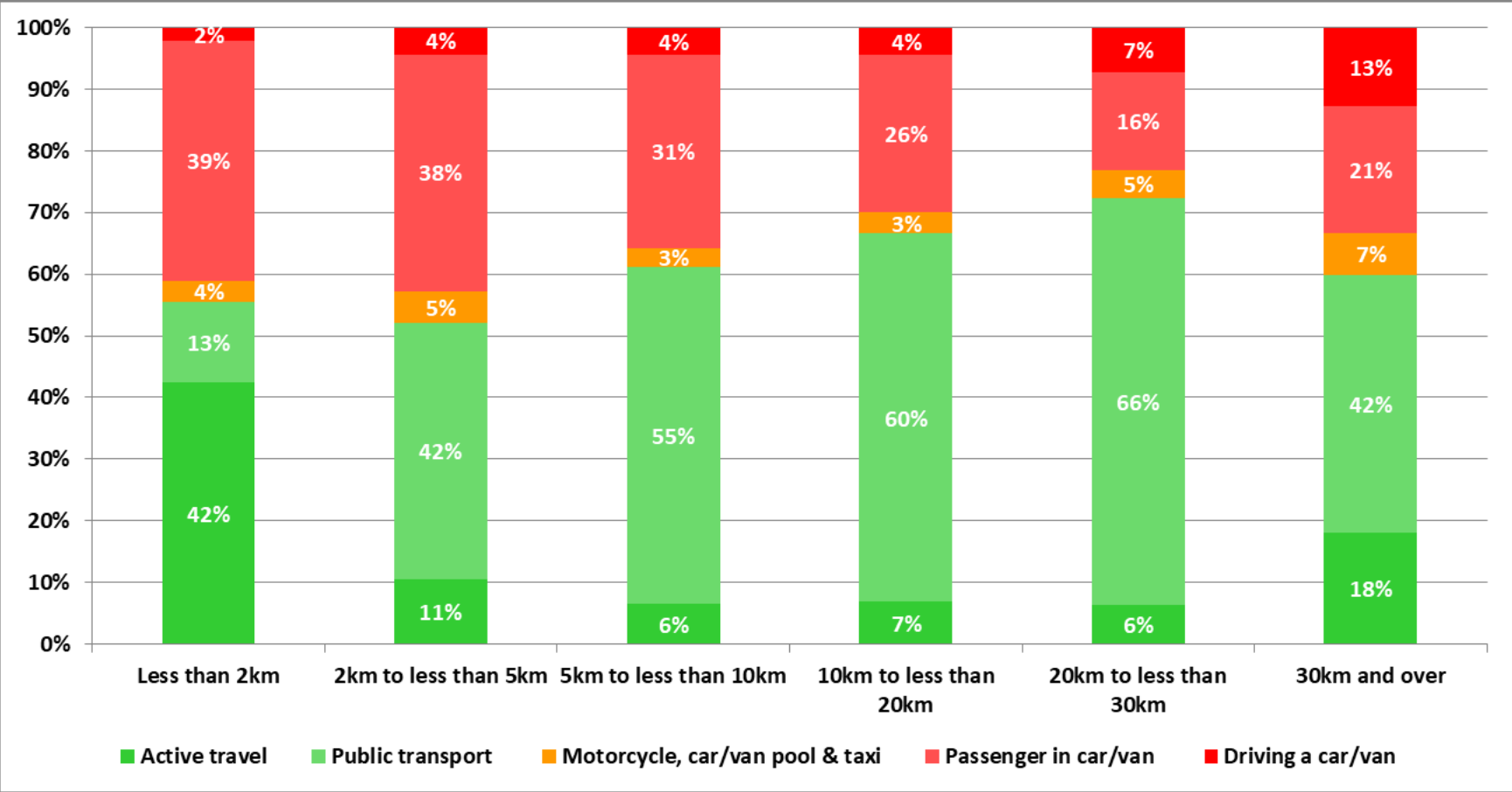
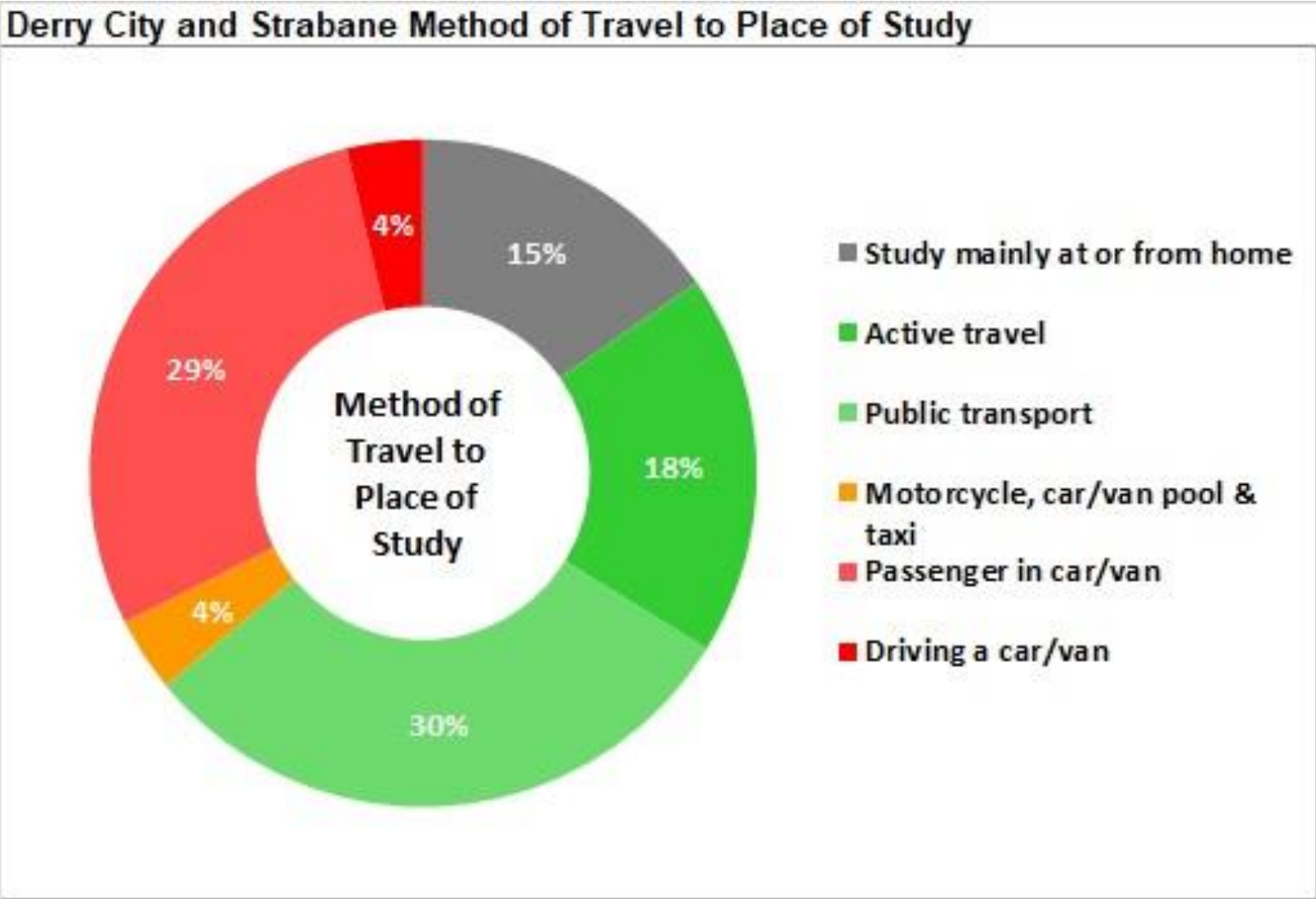
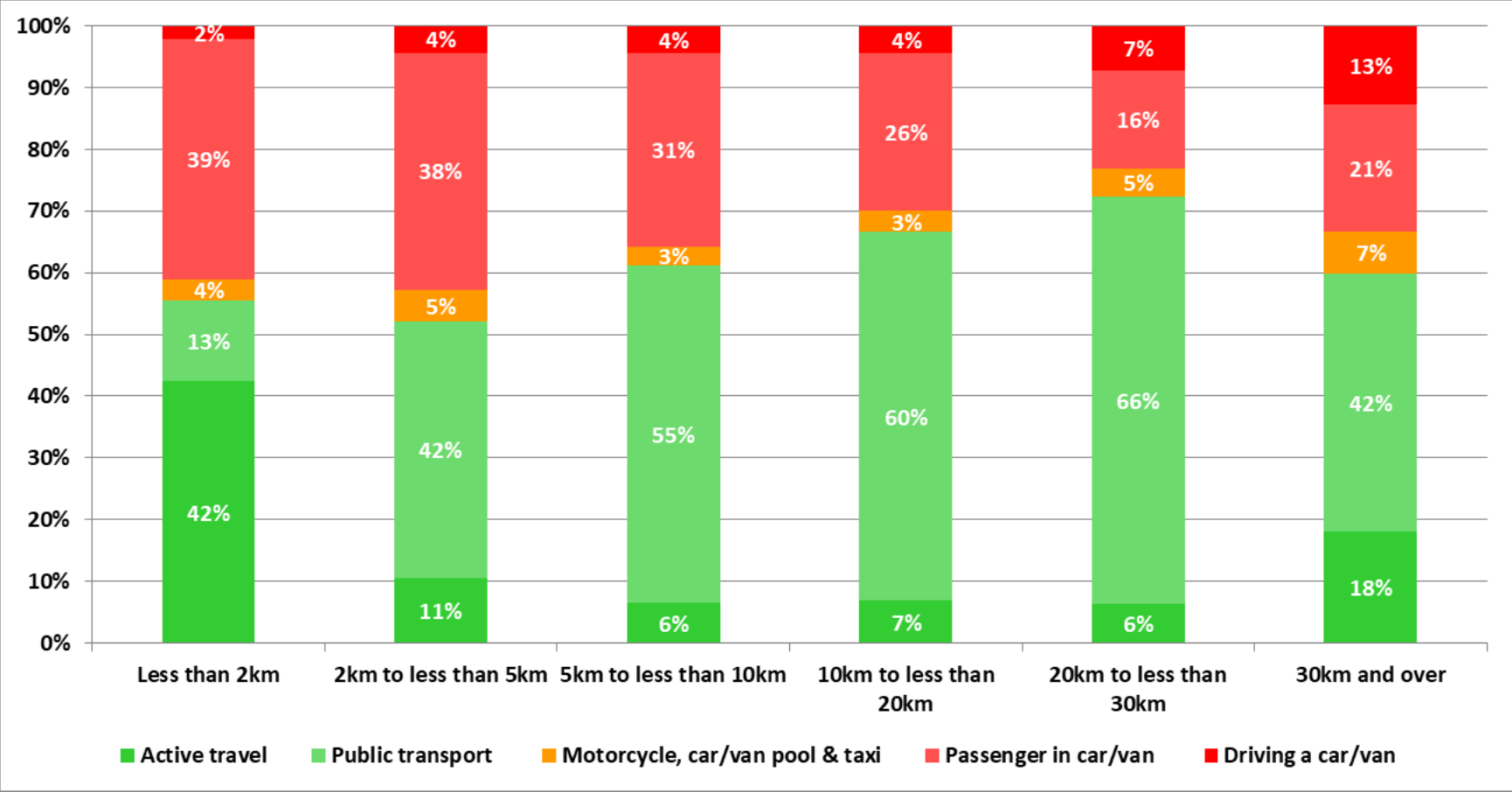


Figure 12 – Chart of Modal Choice for Journey to Education in Derry City and Strabane District Council



* 'Other method' of travel has not been presented in the chart.

Figure 13 – Graph of Modal Choice for Journey to Education by Distance in Derry City and Strabane District Council



Section 5 – Road Network Speeds at Peak and Off-Peak Time Period

Figure 14 – Map of Average Off Peak Speeds (mph) for Roads in Derry City and Strabane District Council

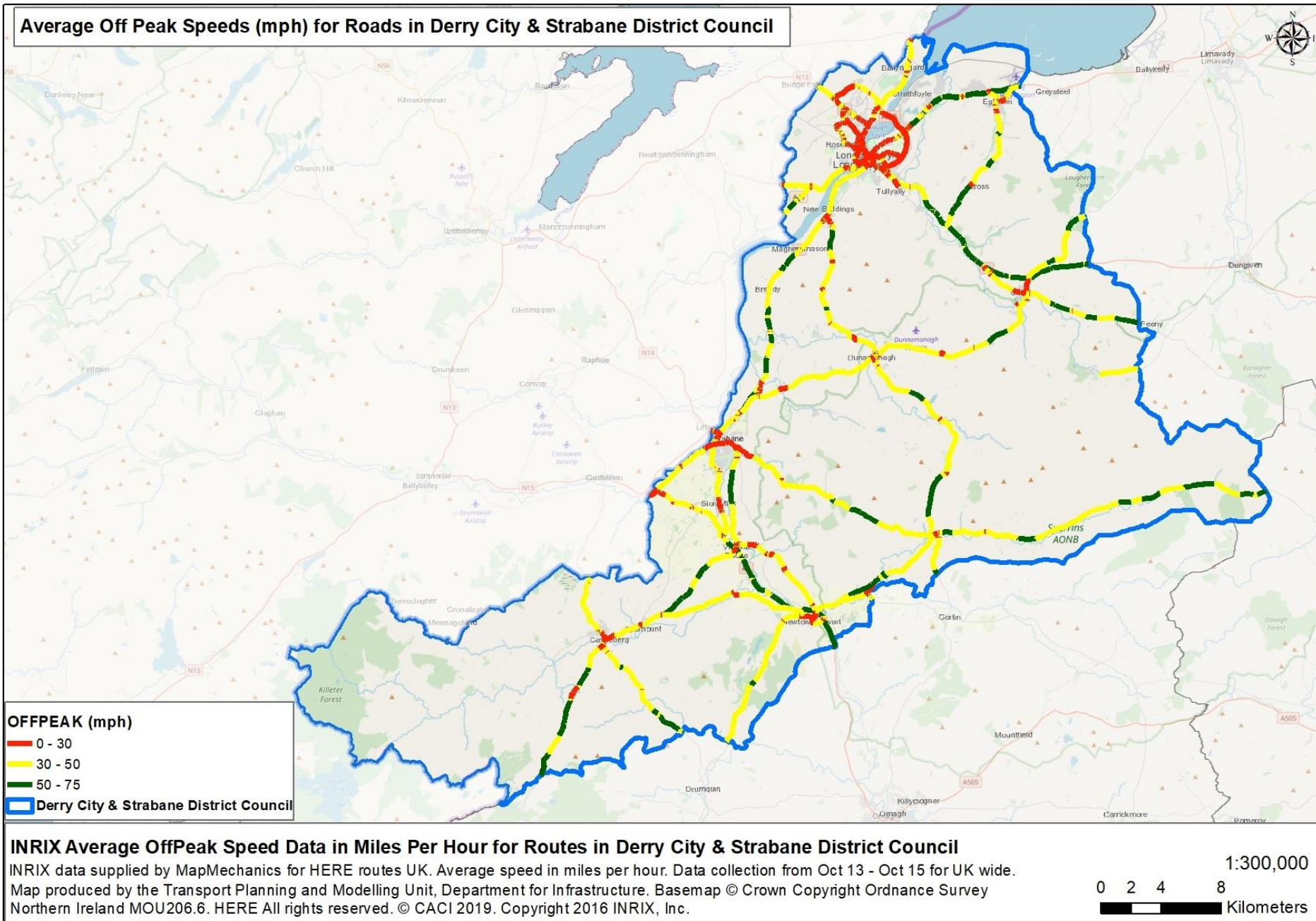
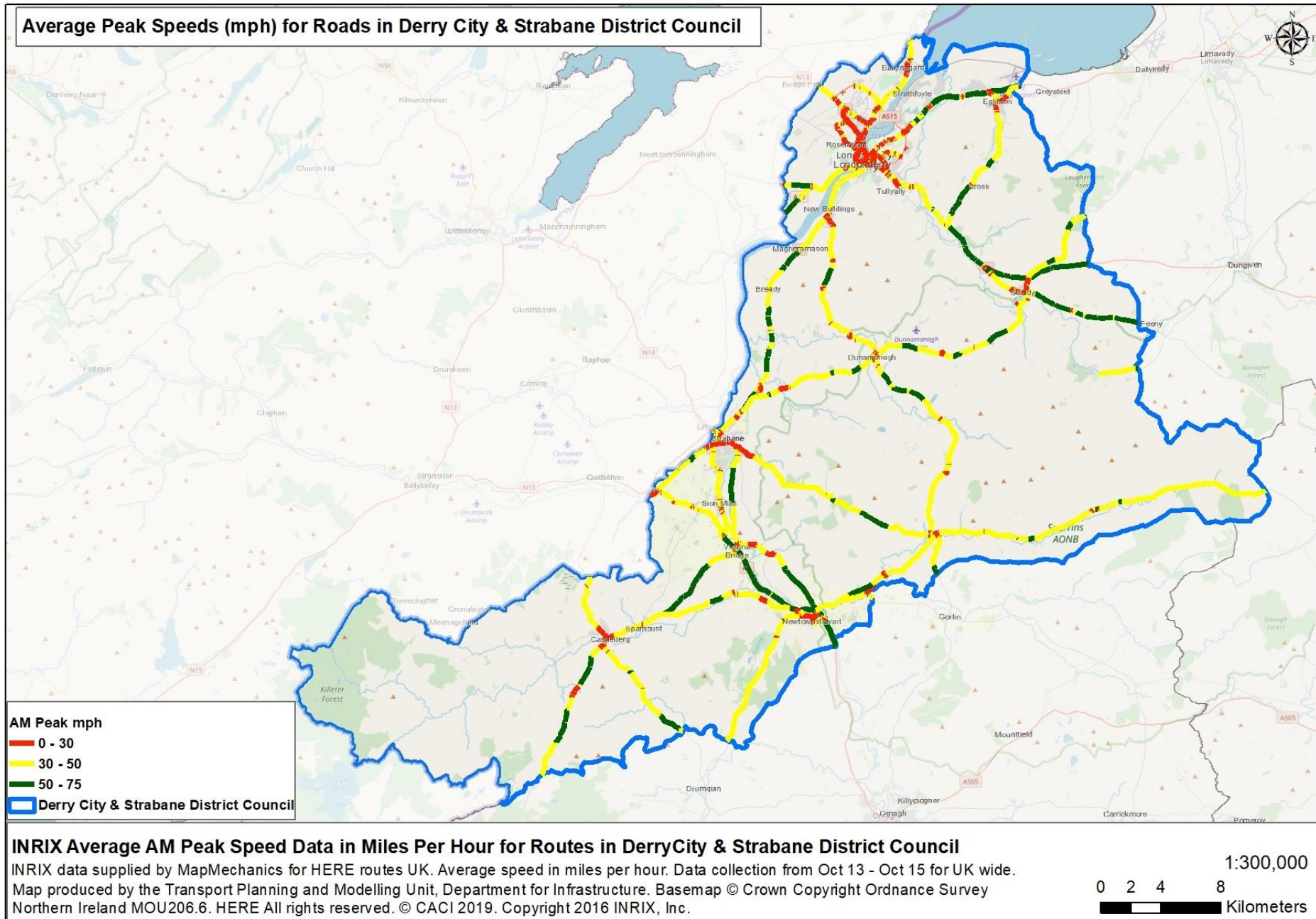


Figure 15 – Map of Average Peak Speeds (mph) for Roads in Derry City and Strabane District Council



Section 6 – Road Collision History

Table 1a – Number of Road Traffic Casualties by Severity and Road User Type in Derry, 2007-2016

Road User Type	2007-2011				2012-2016				2007-2016			
	All casualties	Fatalities	Serious injuries	Slight injuries	All casualties	Fatalities	Serious injuries	Slight injuries	All casualties	Fatalities	Serious injuries	Slight injuries
All Road Users	1,790	8	127	1,655	1,895	5	102	1,788	3,685	13	229	3,443
Pedestrians	253	6	52	195	260	4	49	207	513	10	101	402
Motor Vehicle Users (inc passengers)	1,430	1	50	1,379	1,543	1	34	1,508	2,973	2	84	2,887
Motorcyclists (inc pillion passengers)	65	1	16	48	39	0	10	29	104	1	26	77
Pedal Cyclists	40	0	9	31	51	0	8	43	91	0	17	74
Other Road Users	2	0	0	2	2	0	1	1	4	0	1	3

Casualties in Derry 2012-2016 - Modal Split (%)				
Road User Type	2012-2016			
	All casualties	Fatalities	Serious injuries	Slight injuries
All Road Users	229	0	18	211
Pedestrians	13.1%	0.0%	33.3%	11.4%
Motor Vehicle Users (inc passengers)	79.0%	0.0%	55.6%	81.0%
Motorcyclists (inc pillion passengers)	0.0%	0.0%	0.0%	0.0%
Pedal Cyclists	7.0%	0.0%	11.1%	6.6%
Other Road Users	0.9%	0.0%	0.0%	0.9%

Casualties in Derry 2012-2016 - Severity Split (%)				
Road User Type	2012-2016			
	All casualties	Fatalities	Serious injuries	Slight injuries
All Road Users	1,895	0.3%	5.4%	94.4%
Pedestrians	260	1.5%	18.8%	79.6%
Motor Vehicle Users (inc passengers)	1,543	0.1%	2.2%	97.7%
Motorcyclists (inc pillion passengers)	39	0.0%	25.6%	74.4%
Pedal Cyclists	51	0.0%	15.7%	84.3%
Other Road Users	2	0.0%	50.0%	50.0%

Table 1b – Number of Road Traffic Casualties by Severity and Road User Type in Strabane, 2007-2016

Road User Type	2007-2011				2012-2016				2007-2016			
	All casualties	Fatalities	Serious injuries	Slight injuries	All casualties	Fatalities	Serious injuries	Slight injuries	All casualties	Fatalities	Serious injuries	Slight injuries
All Road Users	191	0	25	166	229	0	18	211	420	0	43	377
Pedestrians	36	0	10	26	30	0	6	24	66	0	16	50
Motor Vehicle Users (inc passengers)	144	0	9	135	181	0	10	171	325	0	19	306
Motorcyclists (inc pillion passengers)	4	0	4	0	0	0	0	0	4	0	4	0
Pedal Cyclists	5	0	1	4	16	0	2	14	21	0	3	18
Other Road Users	2	0	1	1	2	0	0	2	4	0	1	3

Casualties in Strabane 2012-2016 - Modal Split (%)				
Road User Type	2012-2016			
	All casualties	Fatalities	Serious injuries	Slight injuries
All Road Users	229	0	18	211
Pedestrians	13.1%	0.0%	33.3%	11.4%
Motor Vehicle Users (inc passengers)	79.0%	0.0%	55.6%	81.0%
Motorcyclists (inc pillion passengers)	0.0%	0.0%	0.0%	0.0%
Pedal Cyclists	7.0%	0.0%	11.1%	6.6%
Other Road Users	0.9%	0.0%	0.0%	0.9%

Casualties in Strabane 2012-2016 - Severity Split (%)				
Road User Type	2012-2016			
	All casualties	Fatalities	Serious injuries	Slight injuries
All Road Users	229	0.0%	7.9%	92.1%
Pedestrians	30	0.0%	20.0%	80.0%
Motor Vehicle Users (inc passengers)	181	0.0%	5.5%	94.5%
Motorcyclists (inc pillion passengers)	0	0.0%	0.0%	0.0%
Pedal Cyclists	16	0.0%	12.5%	87.5%
Other Road Users	2	0.0%	0.0%	100.0%

Section 7 – Parking Provision

Figure 16 – Map of Parking Provision Locations in Strabane

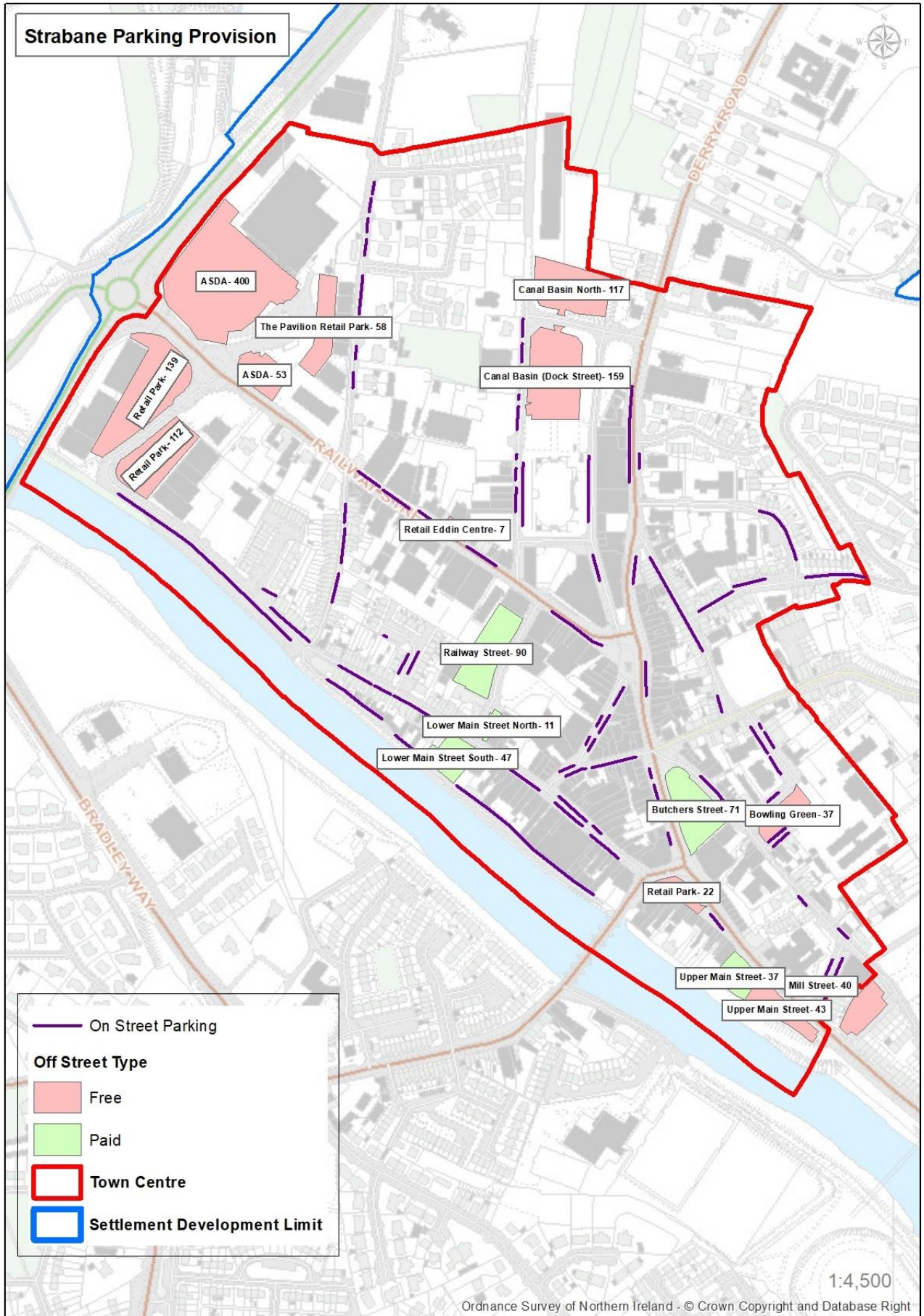


Table 2 – Off-Street Parking Provision by Spaces and Type in Strabane

Site Name	Free / Paid	Ownership	Total Number of Spaces	Includes Number of Disabled Spaces
Canal Basin (Dock Street)	Free	Council	159	2
Canal Basin North	Free	Council	117	0
Lower Main Street North	Paid	Council	11	1
Lower Main Street South	Paid	Council	47	2
Upper Main Street	Free	Council	43	3
Butchers Street	Paid	Council	71	5
Railway Street	Paid	Council	90	2
ASDA	Free	Private	400	22
Retail Park	Free	Private	139	4
Retail Park	Free	Private	112	8
ASDA (Overflow)	Free	Private	53	0
The Pavilion Retail Park	Free	Private	58	2
Bowling Green	Free	Council	37	2
Retail Park	Free	Private	22	1
Retail Eddin Centre	Free	Private	7	0
Mill Street	Free	Council	40	0
Upper Main Street	Paid	Council	37	6
		Total	1443	60

Table 3a – On-Street Parking Provision in Strabane

Parking Length Description	Number of Parking Spaces	Percentage of Total Spaces
Disabled Person Bay	20	4
Limited Waiting 8am-7pm Monday-Saturday 1 hour no return within 1 hour	169	36
Loading Only	19	4
Taxi Only	14	3
Unrestricted Bay	49	11
Unrestricted Kerb	195	42
Total	466	100