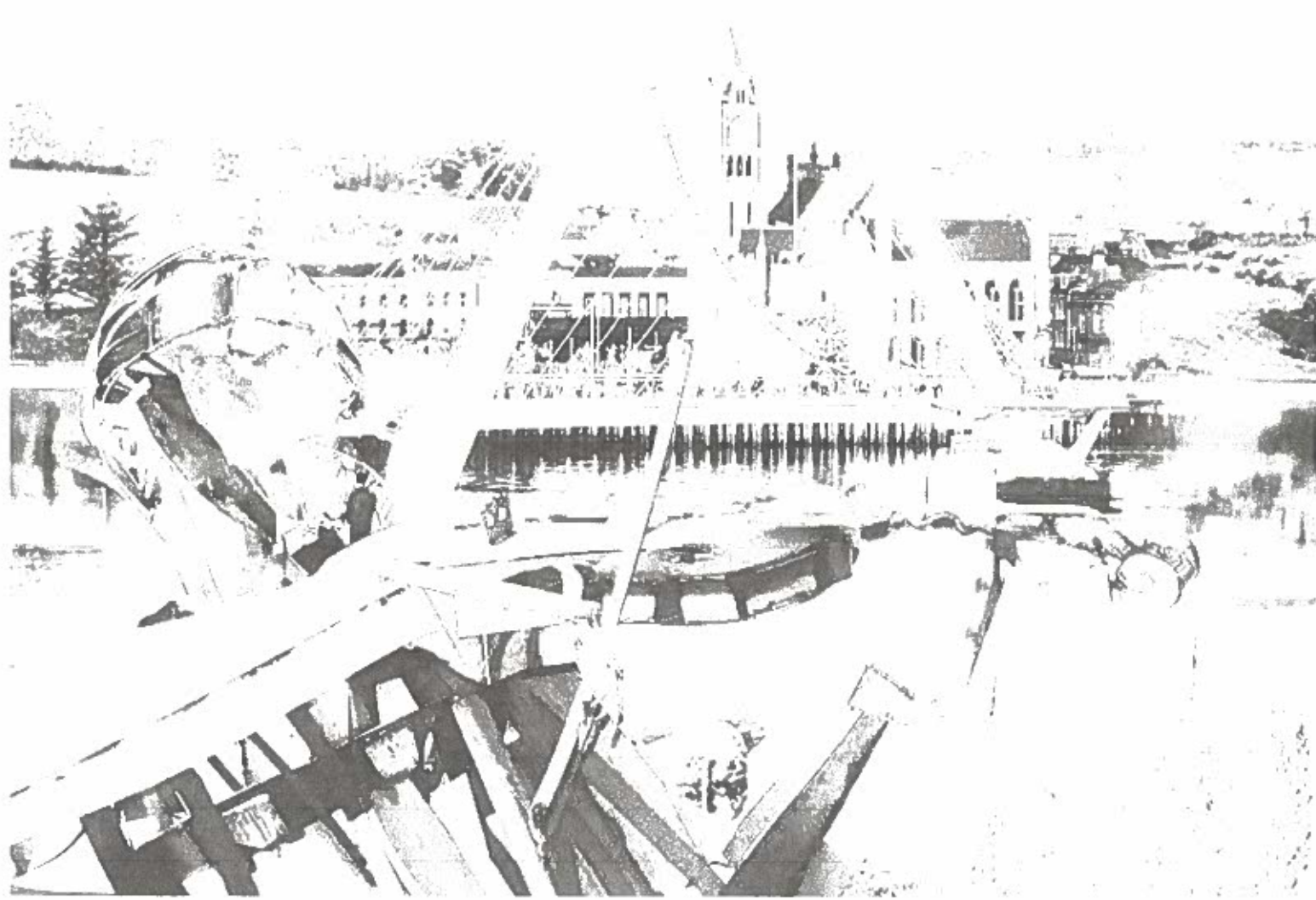


Derry City and Strabane District Council  
**RECEIVED**  
12 NOV 2020  
35

**Representations Form for the Re-Consultation of the LDP  
Draft Plan Strategy & Associated Appraisal / Assessments**



The Council's LDP draft Plan Strategy was already published in December 2019, followed by a consultation period which ended in January 2020. However, a procedural error has been identified so this further consultation period is now being undertaken. Any additional or revised representations may now be submitted during this re-consultation period.

If you did not make a Representation to the draft Plan Strategy during the previous consultation period and now wish to do so, please use this form to make your Representation. Similarly, you can use this form to provide any additional or revised information to a previously made Representation or to indicate that you do not wish to add any further information to your previously submitted Representation.

The new LDP will guide land-use development and set out Planning policies and proposals for the use, development and protection of our settlements and countryside across our District to 2032. Crucially, it will help to deliver the outcomes in the Strategic Growth Plan. Once the LDP is adopted, its Planning policies, zonings and development proposals will be used to determine planning applications across the District. The LDP will comprise of two development plan documents: this LDP Plan Strategy and, in due course, the LDP Local Policies Plan.

This LDP draft Plan Strategy sets out the Council's strategic Planning objectives, designations and policies for the District in line with regional strategies and policies, but tailored to the local needs of this City and District.

The preparation of the PS has been informed by the Council's LDP Preferred Options Paper (POP – May 2017) which provided the basis for consulting with the public and stakeholders on a series of options for dealing with key issues in the Plan area. It set out the Council's initial proposals and policy direction, therefore aiming to stimulate public comment and help interested parties to become involved in a more meaningful way at the earliest stage of Plan preparation. The published draft LDP PS fully reflects a consideration of all the representations made during the POP consultation period and all engagement with stakeholders, consultees and elected Members of the Council.

Complete this draft Plan Strategy Representations Form and either return by email to **LDP@DerryStrabane.com** or download a copy and post to:

**Local Development Plan Team,  
Council Offices,  
98 Strand Road,  
Derry,  
BT48 7NN**

Hard copies of the form will be available at the above address and our other main office at 47 Derry Road, Strabane, Tyrone, BT82 8DY. **Please note that if you are making a representation in any other format, it must include the requested information set out in this form and address the Tests of Soundness.**

The draft Plan Strategy is published for formal public consultation for a period of eight weeks beginning on **11th September 2020** and closing on **6th November 2020**. Please note that in order for comments to be considered valid, you must include your contact details. We will use these details to confirm receipt of comments and to seek clarification or request further information. Anonymous comments or comments which do not directly relate to the draft Plan Strategy will not be considered as part of the consultation process.

The LDP draft Plan Strategy and supporting documents, including the Sustainability Appraisal Report (incorporating the Strategic Environmental Assessment), the Habitats Regulation Assessment, Rural Needs Impact Assessment and the Equality Impact Assessment, are all available to view online [www.derrystrabane.com/ldp](http://www.derrystrabane.com/ldp)

From Friday 11th September to 6th November 2020, between the hours of 9am-5pm (Monday to Friday), all documents will also be available for inspection, by appointment only, at the Council's offices at 98 Strand Rd, Derry BT48 7NN, or at 47 Derry Rd, Strabane BT82 8DU. In order to arrange an appointment to view the documents, or if you have any queries on accessing the documentation, the Planning Office can be contacted on 028 71 253 253 or [ldp@derrystrabane.com](mailto:ldp@derrystrabane.com)

The dPS document will also be available at the Council Leisure Centres and Public Libraries that are open in the District, due to COVID 19 restrictions, from 11th September 2020.

Please note that, due to the current COVID 19 circumstances, there will be no further public meetings or drop-in sessions with this re-consultation. Instead, during the re-consultation period, an appointment may be made to speak to or meet / virtual meeting with a Planning Officer by contacting us at the email / telephone number above, where you can ask questions in the same manner as you would at a public meeting or drop-in.

## Local Development Plan Privacy Notice

Derry City and Strabane District Council is a registered data controller (ZA119397) with the Information Commissioner's Office and we process your information in accordance with the General Data Protection Regulation and Data Protection Act 2018 (GDPR).

Derry City and Strabane District Council only collects and processes personal information about you in order to fulfil our statutory obligations, to provide you and service users with services and to improve those services. Your personal information will be used to populate the LDP Representations Database.

If you wish to find out more about how the Council processes personal data and protects your privacy, our Corporate Privacy Notice is available at:

<https://www.derrystrabane.com/Footer/Privacy-Policy>

It contains the standards you can expect when we ask for, or hold, your personal information and an explanation of our Information Management Security Policy. All representations received will be published on our website and made available at our Local Planning Office, 98 Strand Road, Derry BT48 7NN, for public inspection and will be forwarded to the Department for Infrastructure (DfI) and hence to the Independent Examiner / PAC.

### Why are we processing your personal information?

- To enable the preparation of the Council's Local Development Plan;
- To consult your opinion on the Local Development Plan through the public consultation process;
- To ensure compliance with applicable legislation;
- To update you and/or notify you about changes; and
- To answer your questions.

If you wish to find out more information on how your personal information is being processed, you can contact the Council's Data Protection Officer:

**Data Protection Officer**  
**47 Derry Road**  
**Strabane**  
**BT82 8DY**

**028 71 253 253**

**[data.protection@derrystrabane.com](mailto:data.protection@derrystrabane.com)**

**Q1. Are you responding as an individual, as an organisation or as an agent acting on behalf of individual, group or organisation?**

Please only tick one

- Individual  
 Organisation  
 Agent

**Q2. What is your name?**

Title

First Name

Last Name

Email

**Q3. Did you respond to the previous LDP Preferred Options Paper?**

- Yes  
 No  
 Unsure

**Q4. Tick whichever is applicable:**

**I /we wish to carry forward my previously submitted representation without adding anything further** (Insert Rep Number if known)

**I / we do wish to provide additional / revised information** to my / our previously submitted Representation (insert Rep Number if known)

**I / we did not submit a representation** during the previous consultation period (December 2019 – January 2020) and now wish to submit a Representation during this Re-Consultation period.

Address

Town

Post code

On completion, please proceed to Section E

5.

If you have selected that you are responding as an organisation, there are a number of details that we are legally required to obtain from you. If you are responding on behalf of a group or organisation, please complete this section, then proceed to Section F.

Organisation / Group Name **THE FOYLE CIVIC TRUST**

Your Job Title / Position **TRUST COMMITTEE MEMBER**

Organisation / Group Address

Address **CATHEDRAL HOUSE  
ST COLUMA'S COURT  
BISHOP STREET**

Town **DERRY / LONDONDERRY**

Postcode

On completion, please proceed to Section F

If you have selected that you are responding on behalf of another individual, organisation or group there are a number of details that we are legally required to obtain from you. Please provide details of the individual, organisation or group that you are representing.

### **Client Contact Details**

Title / First Name

Last Name

Organisation / Group Address

Address

Town

Postcode

Email address

On completion, please proceed to Section F

### **Agent Contact Details**

Title / First Name

Last Name

Organisation / Group Address

Address

Town

Postcode

Email address

On completion, please proceed to Section F

**Q4. Would you like us to contact you, your client or both in relation to this response or future consultations on the LDP?** Please only select one

Agent

Client

Both

The LDP draft Plan Strategy will be examined at Independent Examination (IE) in regard to its 'soundness'. Accordingly, your responses should be based on soundness and directed at specific strategic policies or proposals that you consider to be unsound, along with your reasons. The tests of soundness are set out below in Section J.

Those wishing to make representations seeking to change the draft Plan Strategy should clearly state why they consider the document to be unsound having regard to the soundness tests in Section J. It is very important that when you are submitting your representation that your response reflects the most appropriate soundness test(s) which you believe the draft Plan Strategy fails to meet. There will be no further opportunity to submit information once the consultation period has closed unless the Independent Examiner requests it.

Those who make a representation seeking to change the LDP draft Plan Strategy should also state below whether they wish to be heard orally at the Independent Examination (Please see [www.pacni.gov.uk](http://www.pacni.gov.uk) for further details on the IE procedures.)

**Q5. Please indicate if you would like your representation to be dealt with by:**

Please select one item only

Written (Choose this procedure to have your representation considered in written form only)

Oral Hearing (Choose this procedure to present your representation orally at the public hearing)

Unless you specifically request a hearing, the Independent Examiner will proceed on the basis that you are content to have your representation considered in written form only.

Please note that the Independent Examiner will be expected to give the same careful consideration to written representations as to those representations dealt with by oral hearing.



**State which Chapter / Policy / Paragraph / Map that this Section refers to:**

This should relate to only one section, paragraph or policy of the LDP draft Plan Strategy. If you wish to inform us that you consider more than one part of the LDP draft Plan Strategy is unsound, you can submit further representations by completing and submitting additional copies of this section.

**P1. Has the plan been prepared in accordance with the Council's timetable and the Statement of Community Involvement?**

**P2. Has the Council prepared its Preferred Options Paper and taken into account any representations made?**

**P3. Has the plan been subject to Sustainability Appraisal including Strategic Environmental Assessment?**

**P4. Did the Council comply with the regulations on the form and content of its plan and on the procedure for preparing the plan?**

**C1. Did the Council take account of the Regional Development Strategy?**

**C2. Did the Council take account of its Community Plan?**

**C3. Did the Council take account of policy and guidance issued by the Department**

**CE1. The plan sets out a coherent strategy from which its policies and allocations logically flow and where cross boundary issues are relevant, is it in conflict with the plans of neighbouring Councils.**

**CE2. The strategy, policies and allocations are realistic and appropriate having considered the relevant alternatives and are founded on a robust evidence base.**

**CE3. There are clear mechanisms for implementation and monitoring.**

**CE4. The plan is reasonably flexible to enable it to deal with changing circumstances.**

Your comments should be set out in full. This will assist the Independent Examiner to understand the issues you raise. You will only be able to submit further additional information if the Independent Examiner invites you to do so.

If you consider the Plan Strategy to be Sound and wish to support the LDP Plan Strategy, please set out your comments below.

THE FOYLE CIVIC TRUST EXISTS TO PROMOTE, WITHIN THE FOYLE VALLEY, HIGH STANDARDS OF PLANNING AND ARCHITECTURE AND TO SECURE THE CONSERVATION AND IMPROVEMENT OF BUILDINGS AND NATURAL FEATURES OF HISTORIC INTEREST. IN THIS CONNECTION THE TRUST CONSIDERS THAT THE DRAFT PLAN STRATEGY MEETS THE "SOUNDNESS" TEST WITH PARTICULAR REFERENCE TO THE STRATEGY, DESIGNATIONS AND POLICIES SET OUT IN PART E - ENVIRONMENT AND PART F PLACE

AT THE FUTURE LAD LOCAL POLICIES PLAN STAGE THE TRUST WOULD WISH TO SEE CLOSE ATTENTION GIVEN TO THE ARCHAEOLOGICAL AND PRE-PLANNATION HISTORIC SETTLEMENT SIGNIFICANCE OF THE BISHOP STREET WITHOUT VICINITY, INCLUDING THE LANTOWER, ST COLUMB'S WELLS AND LUMEN CHRISTI COLLEGE NEIGHBOURHOODS

In this section, we will be asking you to specify which part(s) of the draft Plan Strategy you consider to be unsound.

Note: If you wish to inform us that more than one part of the draft Plan Strategy is unsound each part should be listed separately, and Sections J and K filled out for each separate part of the draft Plan Strategy. (i.e. if you believe that multiple parts of the draft Plan Strategy are unsound, please fill out multiple copies of Sections J & K).

**Q6. If you consider that the LDP draft Plan Strategy is unsound and does not meet one or more of the tests of soundness below, you must indicate which test(s) you consider it does not meet, having regard to Development Plan Practice Note 6 available at:**

Please note that if you do not identify a test(s), your comments may not be considered by the Independent Examiner. Continued on next page.

This should relate to only one section, paragraph or policy of the LDP draft Plan Strategy. If you wish to inform us that you consider more than one part of the LDP draft Plan Strategy is unsound, you can submit further representations by completing and submitting additional copies of this section.

**Relevant Chapter number(s)**

(and/ or) **Relevant Policy number(s)**

(and/or) **Relevant Paragraph number(s)**

(and/or) **District Proposals Map**

Please give full details of why you consider this part of the LDP draft Plan Strategy to be unsound, having regard to the tests(s) you have identified above. Please be as clear and concise as possible.

If you consider the LDP draft Plan Strategy to be unsound, please provide details of what changes(s) you consider necessary to make the LDP draft Plan Strategy sound.

If you wish to submit an 'expression of opinion' in relation to the Sustainability Appraisal (SA) of the LDP draft Plan Strategy (incorporating the Strategic Environmental Assessment (SEA)) please state them below or by email to LDP@DerryStrabane.com. If sending by email, please clearly state that your comments are in relation to the SA.

If you have any comments or opinions in relation to the Draft Habitats Regulation Assessment (HRA) report of the LDP draft Plan Strategy, please submit them below or by email to LDP@DerryStrabane.com. If sending by email, please clearly state that your comments are in relation to the HRA.

If you have any comments or opinions in relation to the Draft Equality Impact Assessment (EQIA) report of the LDP draft Plan Strategy, please submit them below or by email to LDP@DerryStrabane.com. If sending by email, please clearly state that your comments are in relation to the EQIA.

If you have any comments or opinions in relation to the Draft Rural Needs Impact Assessment (RNIA) report of the LDP draft Plan Strategy, please submit them below or by email to LDP@DerryStrabane.com. If sending by email, please clearly state that your comments are in relation to the RNIA.